



---

**NEW PRODUCT  
RECOMMENDATIONS**

---



## TABLE OF CONTENTS

---

<i>UNDER \$10</i>	1-5
<i>\$10-20</i>	6-11
<i>\$20-30</i>	12-17
<i>\$30-40</i>	18-24
<i>\$40-50</i>	25-32
<i>\$50-60</i>	33-37
<i>\$60-70</i>	38-42
<i>\$70-80</i>	42-45
<i>\$80-90</i>	45-47
<i>\$90-100</i>	45-48
<i>\$100-120</i>	48-49
<i>\$120-150</i>	49-50

***FOR PRICING ON ITEMS, PLEASE E-MAIL SCOTT ANDREWS WITH THE ITEM NUMBER, DESIRED QUANTITY, AND LOGO PLACEMENT REQUEST.***

Scott Andrews  
Sportsman's Imagewear  
scott@andrewssport.com  
(504) 450-9556



Available Colors



**Hugo Copper Vacuum Insulated Tumbler 20oz**

**Product Code #1624-89**

Durable, double-wall stainless steel vacuum construction with copper insulation, which allows your beverage to stay cold for 24 hours and at least 8 hours for hot beverages. The construction also prevents condensation on the outside of the tumbler.



**Hunt Valley® Tumbler 16oz**

**Product Code #0045-72**

For the Hunter within, this camouflage style allows you to enjoy your beverage without standing out. Double-wall stainless steel construction. Easy use thumb slide push-on lid allows you to drink with one hand. Leed's exclusive. 16oz.



**Deluxe Swivel Dashboard Phone Holder**

**Product Code #3350-61**

Made to fit most smartphones and small electronics with its adjustable padded sides (maximum width 5"). Features include suction cup for dashboard mounting and swivel holder for vertical or horizontal viewing.



Available Colors



**60" Golf Umbrella**

**Product Code #2050-27**

Full-size golf umbrella. Manual opening. Large polyester canopy with matching color case. Sturdy metal shaft with large wood handle.



Available Colors



**Pedova™ Large Bound JournalBook™**

**Product Code #2700-03**

Elastic pen loop. Blue and silver ribbon page markers. Includes 125 sheets of lined paper.



**Mini Grip Slim and Bright Magnetic LED Flashlight**

**Product Code #1226-14**

This spray rubber mini flashlight is slim and bright with 3 modes. The first mode a 4 LED flashlight, the second mode a 6 LED flashlight and the third mode is both on at once. Magnetic back for easy storage or for hands free use when attached to metal surfaces. Nylon carrying strap. Push button on/off. 29 lumen. 2 AAA batteries included



**Pop Up 6 LED Lantern**

**Product Code #1226-40**

LED lantern turns on by sliding open and turns off by closing. Opens to 7.25in. fully extended. Features metal carry and hanging handle. Includes 3 AAA batteries.



**Spidey 8-In-1 Screwdriver Flashlight**

**Product Code #1430-28**

Get your senses ready for this 8-in-One Screwdriver Flashlight. Perfect to keep around the house, this tool has 1 LED light, 3 Phillips head, 3 Flat head, and a small eye glass tool with screw on cap. Press the button once for the flashlight, and again for the LED to illuminate the tools. 3 AAA batteries included.



**Typhoon Car Charger with Auto Safety Tools**

**Product Code #7140-49**

The Typhoon Car Charger with Auto Safety Tools is ideal for all road trips. Emergency features included are a seat belt cutter and safety hammer. This dual car charger has a 5V/1A output and a 5V/2A output which allows you to charge a smartphone or tablet.





### Bamboo Cutting Board with Silicone Grip

**Product Code #1301-59**

The natural color bamboo cutting board features a thumb hole with silicone ring for ease of handling and provides a perfect location to hang the cutting board when not being used. Due to the nature of the bamboo material, variations in laser imprinting quality may occur.



### Grill Master BBQ Spatula

**Product Code #1070-72**

Durable stainless steel spatula with wooden handle. Features a bottle opener and serrated edge for slicing. Individual BBQ tools make a great gift! Includes clear protective covers.



Available Colors



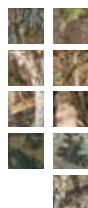
### Port Authority® Camouflage Fleece Beanie

**Product Code #C901-**

This beanie has an anti-pill finish for lasting wear and it's perfect for times you want warmth without bulk or weight. Great for early morning outings or layered under a helmet or hat.



Available Patterns



### Port Authority® Pro Camouflage Series Cap

**Product Code #C855**

This cap features the top brands and patterns preferred by outdoor enthusiasts everywhere.



### Port Authority® Americana Contrast Stitch Camouflage Cap

**Product Code #C909**

An embroidered flag label on the side plus heavy contrast stitching on the bill make this camo cap a true American classic.



Available Colors



### Port Authority® Pro Camouflage Series Garment-Washed Cap

**Product Code #C871**

Garment washed for softness this cap is available in three popular outdoor prints.



Over 40 Colors Available

### Richardson Mesh Snapback Cap

**Product Code #112**

Cotton twill front panels and visor with mesh back panels; ProCrown with buckram-fused front panels and ProStitching; pre-curved PE visor with eight rows of stitching.



Available Colors



### 12 oz Urban Peak® 3-in-1 Insulator

**Product Code #SL233SS-**

- 18-8 Stainless Steel dual wall construction
- Copper lined, vacuum insulated deep draw liner will maintain optimal drinking temperatures.
- Made with FDA compliant materials
- Sweat-free design
- Twist top rubberized ring to hold a standard 12 oz. can or bottle



### Project Worklight (1W/COB)

**Product Code #FL150**

- Slim design provides a handy and comfortable grip.
- Includes a foldable 360 degree pivoting hanging hook.
- Magnet for hands free illumination
- Comes with four AAA batteries.



### COB Multi Mode Keylight

Product Code #FL153

- 0.5 Watt COB light
- Push button that transitions between high output beam, low beam and S.O.S function
- Includes a key loop



### Axis COB Worklight

Product Code #FL155

- Work lights (chip on board) provides a powerful stream of light
- Features a top pivoting COB spotlight
- COB side bar for perimeter lighting
- Fold out stand for hands free use and a heavy duty magnet on base
- Comes with four AAA batteries



### Bullware Bottle Opener

Product Code #1033-20

Grabbing booze by the horns. Wood Handle bottle opener with leather wrist strap. Hop on the Bull. Craft up the night. Live Classy.



### Arch Clip Worklight (1W/SMD)

Product Code #FL147

- Powered by 20 SMD light bulbs and a 1 Watt bulb
- Lightweight ABS plastic.
- Includes an On/Off power button a magnet on the back to adhere to metal objects and clip.
- Comes with three AAA batteries.



### Task Worklight (COB)

Product Code #FL149

- Constructed out of ABS plastic and anti-slip rubber.
- Featuring a 360 degree pivoting hanging hook
- Magnet located on the back allowing you mount it to most metal surfaces
- Includes three AA batteries



### Burst Worklight (SMD/COB)

Product Code #FL148

- Compact in size and lightweight.
- Features a bright COB LED or six SMD bulbs located at the top.
- Includes a magnetic back with fold out hanging hook.
- Comes with three AAA batteries.



### Fleece Roll Up Blanket W/Handle

Product Code #FB100

Made of 100% polyester fleece with Velcro closure and carrying handle, this soft comforter measures 12" W x 6" D rolled up, and 45" W x 63" L unrolled. With a washable surface and a thickness of 380 grams, this super-snug coverlet is perfect marketing for beach resorts and outdoor festivals.



### COB Triangle Utility Light with Magnet

Product Code #L276COB

The COB LED is designed to use less energy and has better temperature management than other light technology. The utility light has two settings, 100% and 30%, plus an on/off function. The light is 160 lumens with a distance of 180 yards. Four AAA replaceable batteries are included.



### Quad Power Bank (2,200mAh)

Product Code #EL124

- 2200 mAh Grade A battery
- Lightweight plastic case design
- Includes micro USB cable and port for charging, user manual
- 6-7 hour charge time



Available Colors



### Mighty Work Light (COB)

Product Code #FL146

- Includes a pivoting fold away hook.
- Has a clip to secure to a belt or pocket.
- Base stand pivots for hands free use.
- Includes a magnet on the base of the light
- Perfect to hang or magnetically attached to metal objects
- Comes with three AAA batteries



### Compact 25 Pc Driver Set

Product Code #TS59

- Compact case holds 25 assorted sizes of Robertson, flathead, Phillips, torx and hex bits.
- Comes with a comfort grip ratchet driver handle.
- All contained in a moulded case with clip closure.



Available Colors



### Wave LED Flashlight (21 LED)

Product Code #FL85

- Output: 25 lumens
- Lightweight Aluminum casing features 21 LED bulbs, recessed push button on/off switch and lanyard.
- Includes three AAA batteries.



### Bouton Anser Gray Glasses

Product Code #SG18GR

ANSI-Z87.1 approved.  
Bayonet-style wrap-around lenses with hinged arms.  
Scratch-resistant polycarbonate lens.  
Provides 99.9% UVA and UVB protection.  
Includes microfiber storage pouch and neck cord.



### Aria Portable Earbuds

Product Code #Aria

Need a fun and affordable promotional product for your marketing campaign? Look no further than the Aria portable earbuds. Features an all white color finish, ultra soft cushioning, and 2 piece travel case with large imprint area. Showcase your corporate colors with optional full color digital printing.



### Kempton 3 Piece Car Kit

Product Code #GT9110

Tire gauge, flashlight and ballpoint pen in metal hinged giftbox:  
• Aluminum Flashlight  
• Tire Pressure Gauge  
• Plunge-Action Ballpoint Pen  
• Hinged Aluminum Case  
• 2 AAA Batteries Included  
• Flashlight: 50 Lumens



Available Colors



### VCOL003 CHILL by Flexi-Freeze® Clip Cooler

Product Code #VCOL003

- 210D polyester and mesh
- Removable sheet of cubes containing pure USA water for easy freezing
- Front slip pocket and side mesh pocket
- Zippered main compartment converts into an adjustable handle with buckle closure
- Holds six 12-oz cans



### Boss Tumbler Camo Print

Product Code #CAMOBOSS

- 30 oz. double wall stainless steel tumbler
- Vacuum insulated
- Acrylic push in top with sliding tab
- Large 30 oz. capacity
- Excellent temperature retention
- Passivated against chemical reactivity and metallic taste
- Hot 6 Hours, Cold 24 Hours



### Ultimate Camo Field Seat

Product Code #FSAPX

The Ultimate Camo Field Seat in Realtree APX is both comfortable and tough. The extra large seat and back are made with thick closed cell foam. The seat back is reclinable with the adjustable straps and has plenty of support with heavy duty support spines.



Available Colors



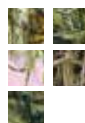
### Rally Cooler Bag (18 Can)

Product Code #CB80

- A smart look is delivered using a combination of 600D polyester and Air Mesh accents.
- This cooler is foam insulated with a heat sealed liner that ensures waterproof storage.
- Full length front slash pocket and side mesh elastic pocket offer additional storage and adjustable shoulder strap ensure comfortable transport.



Available Colors



### Reversible Camo Fleece Beanie

Product Code #FCB-150

This fleece beanie reverses from selected camo to black.



Available Colors



### Igloo® Avalanche Cooler

Product Code #9040

- Leak resistant, heat-sealed antimicrobial liner
- Easy pull tab
- Velcro top closure with expandable zippered option
- Foam top grab handle for comfort
- Side mesh water bottle pocket (water bottle not included)



Available Colors



### Coronado Lunch Cooler

Product Code #9532

- Front slash pocket, top zippered closure, d-ring, top grab handle, side mesh water bottle pocket, dual insulated compartments
- Top insulated compartment with thermal lining
- Heat sealed bottom insulated compartment with PEVA lining
- 8 can capacity



Available Colors



### Super 3W LED Headlamp

Product Code #99-287X

Ultra-bright 3 Watt High Performance LED shines 117 Lumens output • 4 Lighting modes include High Beam (beam distance 132 ft. / 40 m), Low Beam, fixed Red Emergency, and Red Strobe for signaling • High Beam battery run time is up to 6 hours • Water-resistant and impact-resistant construction with Easy Access Button



### 3AAA Tactical Aluminum Flashlight with CREE LEDs

Product Code #L273CR

Cree T6 bulb is very bright and features 100%, 50%, 20%, fast flashing and SOS. The Cree bulb has 220 lumens with a distance of 270 yards. The flashlight has an adjustable zoom light circle for very tight, long distance or wide perimeter beam and the barrel has a defense bezel. Three replaceable AAA batteries are included.



Available Colors



### Mag-Lite® Solitaire

Product Code #K3A

3 1/4" in length. Comes with key ring lanyard attachment, 1 "AAA" battery and packaged in a sleek, black presentation box.



Available Handle Colors



### Cedar Creek 8-in-1 Multi Bit Screwdriver

Product Code #MP-8

7.5" long. Loaded with 7 durable industrial-grade steel bits at the end of the tool. Includes Slot (flat) bit 6, Slot (flat) bit 4, Phillips bit 1, Phillips bit 2, Phillips bit 3, Torx bit 15, Square bit 2, and a Hex Nut Driver at the end of the shaft. BUILT in the USA.







### Dynamic Duo Charging Cable

**Product Code #14033-01**

Charge all of your electronic essentials with a single cord. The Dynamic Duo Charging Cord easily converts from a Micro-USB adapter to an MFI (Made for iPhone) adapter that is certified by Apple. MFI adapter is securely attached to the cord and quickly snaps into place in just seconds. Stainless Steel inlays can be laser engraved with amazing detail.



### Urban Peak® Apex 16 Can Cooler Bag

**Product Code #CB125**

- FDA approved thicker liner 420D Jacquard and 600D Polyester and foam lining that is 10mm thick keeps things cold
- Top zippered compartment, front snap closure for added security, two side mesh and one front mesh pocket for additional storage
- Has a removable and adjustable air mesh padded shoulder strap



### Adventure Multi Tool

**Product Code #HF23**

- Anodized aluminum finish
- Includes small/large blade, can opener, bottle opener with slotted screwdriver, Philips screwdriver, pliers, wire cutters, scissors, fishing saw, file, small slotted screwdriver



Available Colors



### Mega Hugo Copper Vacuum Insulated Tumbler 30oz

**Product Code #1625-09**

Durable, double-wall stainless steel vacuum construction with copper insulation, which allows your beverage to stay cold for 24 hours and at least 8 hours for hot beverages. The construction also prevents condensation on the outside of the tumbler.



Available Colors



### Arctic Zone® Titan Deep Freeze® 2 Day Lunch Cooler

**Product Code #3860-56**

This is the ultimate lunch or 10-11 can cooler designed for work or play. Therma-Flect® interior radiant barrier is a multi-layer design to keep cold in, and heat out. Ultra Safe® leak proof, easy clean lining. Exterior pocket. RhinoTech™ tough, water and stain resistant, as well as wipe clean exterior.



### Pebble Outdoor Bluetooth Speaker

**Product Code #7199-96**

The compact size makes it easy to carry on your daily adventures. With an IPX5 rating the wet conditions won't damage the speaker. It features a 3 Watt speaker and built in music controls. Bluetooth working range is 10 meters (33 feet). Enjoy up to 1.5hrs. of music at max volume on a single charge.



### Trion-mini Dual Output LED (CREE® XPE-R2 3W)

**Product Code #FL128**

- Features a rotary action focus ring which allows you to adjust from a tight long distance beam to a wide perimeter beam
- Hard push on/off button can be pushed softly to cycle through 3 selectable modes; high, low, and strobe
- Can be used for signaling or tactical applications



### Utility Roadside Flashlight (COB/CREE® XPG-R5)

**Product Code #FL141**

- Features a powerful spotlight with an adjustable beam, utilizing a push/pull head
- High and medium powered COB side light for perimeter lighting.
- Base of the flashlight includes a heavy duty magnet.
- Includes four AAA batteries.



### Trion Dual Output LED (CREE® XP-E R2 3 Watt)

**Product Code #FL91**

- Output: 207 Lumens High, 114 Lumens Low
- Designed with a tactical defense bezel, scalloped tail cap and Stainless Steel carrying clip.
- Use a soft touch on the dual output tail cap switch to transition between high output to low output and to the strobe option used for signaling or tactical applications





**The Sportula BBQ Spatula  
w/License to Grill Design**  
**Product Code #1037-04**

The Sportula BBQ spatula is uniquely designed for the ultimate tailgater. "License to Grill" is laser cut through the heavy-duty stainless steel blade while your personalized graphic can be added to the brass-riveted, hard maple handle. An integrated bottle opener adds the finishing touch.



Available  
Colors



**Arctic Zone® 18 Can Cooler  
Backpack**  
**Product Code #3860-59**

Made with high density thermal insulation, this backpack features an exterior zippered pocket, mesh pocket and padded adjustable backpack straps. Ultra Safe® leak proof, easy clean PEVA lining.  
12 can capacity cooler.



Available  
Colors



**Infinity 12 Can Sport Cooler**  
**Product Code #CB41**

- This cooler has foam insulated heat sealed liner.
- Constructed of 420D Nylon/Dobby and 600D Polyester.
- Front and side zippered pockets and a mesh pocket to provide extra storage while the shock cord and removable/adjustable shoulder strap adds convenience.



**Jolt Premium Power Kit**  
**Product Code #7120-29**

Whether you are in your car, office or working outside the Jolt Premium Power Kit is the answer to all of your smartphone charging needs. The kit includes a 2200mAh Jolt Charger giving an iPhone 8 hours of additional talk time, 5V/1A Car adaptor, 5V/1A AC adaptor and Micro USB to USB charging cable.



Available  
Colors



**3-in-1 LED Flashlight**  
**Product Code #NL3A**

This rugged, machined aluminum light can be converted from a flashlight, to a lantern with a simple sliding motion, or can be easily switched into safety light mode. The intensely bright, 250 Lumen flashlight has high and low modes both as a flashlight, and when converted into its lantern mode.



Available  
Colors



**Carhartt Force® Swifton  
Camo Hat**  
**Product Code #101469**

- Poly/spandex blend with fleeced interior works hard to keep you warm and comfortable
- FastDry® technology wicks away sweat for comfort so you can stay focused on your day
- Reversible hat to Bright Orange with Camo trim for when you need visibility
- Carhartt label sewn on bottom hem



Available  
Colors



**Carhartt Force® Camo Helmet  
Liner**  
**Product Code #101806**

- Lightweight poly/spandex blend with fleece interior provides warmth and comfort whether worn alone or with additional head protection
- FastDry® technology wicks away sweat for comfort so you can stay focused on your day
- Fights odors: traps and releases them in the wash



**30 oz Polar Bear Tumbler**  
**Product Code #04020-01**

Our vacuum insulated Polar Bear Tumbler compares to the conspicuous retail brands with its performance features including the clear push-down lid. Contour shape allows this giant tumbler to fit in cup holders for most cars, trucks and boats. The Polar Bear is copper vacuum insulated.



Available  
Colors



**16 oz Seattle's Finest Ceramic  
Tumbler**  
**Product Code #05024-01**

Cozy up next to the fireplace with our new double wall ceramic tumbler. "Reactive Glaze" creates a glossy finish with special variations of color, making each piece unique. With matte black interior and a slide top lid that resists accidental spills, this tumbler looks great and travels well.



**Nike Golf - Dri-FIT Swoosh Perforated Cap**

**Product Code #429467**

Maximum breathability is achieved with Dri-FIT moisture management technology and perforated mid and back panels. A contrast underbill reduces sun glare. This 6-panel cap has an unstructured, low-profile design with a hook and loop closure. The contrast Swoosh design trademark is embroidered on the bill and center back.



**Fleece 2-in-1 Headwear**

**Product Code #A202**

- Hat: 100% polyester
- Pull-down face mask: 90% polyester/10% spandex
- Fleece hat with pull-down face mask for warmth
- Mask can be tucked up into hat when not in use
- Carhartt label sewn on front



**Personal Cooler - Max-5**

**Product Code #CLPMAX-5**

The Personal Cooler with Realtree® MAX-5 Camo is great for your afternoon adventure. This cooler can hold up to 8 cans plus ice for hours, thanks to the double heat sealed PEVA no-leak liner. It is easy to carry with its webbed handles or by the removable double padded shoulder strap.



**Dri Duck 3D Series Bass**

**Product Code #3315**

100% Cotton Brushed Chino Twill, Unstructured, Low-profile, Six-panel, Pre-curved Distressed Visor, Sewn Eyelets, Velcro Closure, One Size Fits All



**Dri Duck Redfish**

**Product Code #3454**

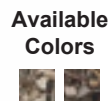
100% Polyester, Mini ripstop fabric, 100% polyester mesh back, soft structured, low profile, six panel, Pre-curved visor, performance sweatband, plastic tab closure.



**Dri Duck Buck**

**Product Code #3301**

100% Cotton brushed chino twill (for standard colors), Structured, Mid Profile, Six Panel, Pre-curved Visor, Sewn Eyelets, Velcro Closure, One size fits all.



**Dri Duck Camo Mallard, Realtree Max 4**

**Product Code #3254**

- 2200 mAh Grade A battery
- Lightweight plastic case design
- Includes micro USB cable and port for charging, user manual
- 6-7 hour charge time



**4-LED Solar Flashlight**

**Product Code #GL2211**

- Camping flashlight
- 4-LED Super Bright Flashlight
- Outdoor Solar Panel
- Wrist Strap
- Flashlight: 80 Lumens



**Coronado Camo Folding Chair with Carrying Bag**

**Product Code #GR5401**

This camo folding chair has a steel tubing frame and is made from durable 600D polyester. It features arm rests, two mesh cup holders and includes a drawstring carrying case. Maximum suggested weight is 300 lbs.



**Cree XP-E Flashlight +  
Bottle Opener**

**Product Code #Powercap**

*Aluminum flashlight with genuine carbon fiber inlaid handle has a bright Cree XP-E high efficiency white LED. Light also features a notched design to prevent it from rolling away, bottle opener, wrist strap and a rubber on/off switch.*



**POWERCAP® LED Lighted  
Beanie Hat**

**Product Code #MXPD-4**

*The 4 LEDs provide more than 48 Lumens. Clicking the easy on/off switch hidden in the band, you'll notice that 2 of the LEDs are angled down at 55 degrees to light up where your hands are for close up tasks, while the other 2 LEDs are aimed forward to light the distance up to 72 feet away.*



**Prudhoe Bay Cub Cooler**

**Product Code #PBCUB**

*The main compartment is designed with a double heat sealed PEVA No-Leak lining to ensure your drinks stay ice cold. What makes the Cub stand apart, is the dry compartment with access through the top so you can reach all the snacks you packet in no time. The Cub comes complete with removable shoulder strap and a handy front pocket.*



**Camo All In One Cooler**

**Product Code #CHCLAPX**

*The All In One cooler in Realtree APX Camo is the only cooler you will ever need. While not only able to hold 16 cans plus ice, this cooler stands out with it's fold down 3 can holder, and 4 mesh pockets for plenty of storage, and as always, our 5 year no leak liner guarantee.*



**Ultimate Camo Dry Top Cooler**

**Product Code #MXCLDC-5**

*The Ultimate Camo Dry Top Cooler in Realtree MAX5 Camo earned it's name by being tough. It's made with our heavy duty nylon, heavy duty zippers and pulls, and padded everywhere. This cooler is made to hold 16 cans plus ice, as well as a huge double access dry compartment on top.*



**Camo Voyager Duffle**

**Product Code #D42APX**

*The Camouflage Voyager Duffle Bag in Realtree APX is made of our tough 600 Denier polyester and has a large main compartment, zippered front pockets, utility "D" ring, adjustable padded carry strap and a web carry handle with wrap.*



**Camo Shell Bag**

**Product Code #SBAPX**

*The Camo Shell Bag come with two large shell pockets, a front slip pocket, and 2" adjustable webbed belt. This bag is foam insulated throughout for comfort and stability.*



**Available  
Colors**



**Mesh Camp Chair**

**Product Code #MECH**

*The Mesh Camp Chair brings you outstanding comfort and breathability. With comfort in mind, the 600D Poly Mesh offers superior air flow. The MECH is not just comfortable. With a tag rating of 350lbs, its strong! Includes a tough 600D carry and built in back pocket.*



**Prudhoe Bay Bandit**

**Product Code #PBBC**

*It has strong 1680D nylon along with webbing to make sure the cooler could go anywhere. With a spacious double heat sealed PEVA no-leak liner compartment capable of holding up to 18 cans, The Bandit will keep cold for hours. A fully loaded cooler gets heavy, the padded webbed handle and removable double padded shoulder strap included.*





Available  
Colors



### Coleman® BASIC 6-CAN COOLER

Product Code #VCLM003

- Soft-sided polyester exterior with heat-sealed PEVA lining
- Front zippered pocket and zippered main closure
- 43" adjustable shoulder strap with 7" top handle
- Interior mesh pocket
- Holds 6 cans



### Divide™ 250 Lumen LED Flashlight

Product Code #231342

From your adventures up in the mountains or down by the river, take this flashlight anywhere and everywhere. On a normal flashlight, there is always some residual drain as long as the battery is connected in the circuit, even when the light is off. Be ready for any situation with this lightweight, water resistant, and strong flashlight.



Available  
Colors



### 9 Can Soft Sided Cooler without Removable Liner

Product Code #31499

- The extra storage space all around the cooler makes it the perfect fit for you and your needs.
- Adjustable shoulder strap
- Front zippered pocket
- Bungees on lid hold extra gear
- Mesh pocket in lid
- Back mesh pocket



### Sports Backpack

Product Code #3017

- 600D Nylon With Ballistic Vinyl Bottom Support
- Adjustable Mesh Lined, Foam Rubber Padded Shoulder Straps And Padded Web Carrying Handle
- Front Zippered Organizer Compartment With 2 Outside Pockets For Accessories And Front Zippered Mesh Pocket



Available  
Colors



### Crescent LED Multi-Tool

Product Code #GT1012-

This stainless steel multi-tool features spring-loaded pliers with wire cutter, a steel knife, fishing line needle, an awl / small screwdriver, bottle opener with flathead screwdriver, saw blade and LED Flashlight in a convenient nylon belt pouch. Three mercury-free LR927 batteries included.



### Vogue Camera Lens

Product Code #VOGUE

Instantly enhance your photos with the 0.65x wide angle lens, or capture the most stunning details with the 10x macro zoom lens. Featuring an ultra bright, rechargeable LED light to brighten up your focal point. Includes lens protectors, USB charge cable, cleaning cloth, and drawstring carrying pouch. Available with optional full color logo imprint.



### Vienna BT Mouse

Product Code #Vienna BT

Showcase your company message all around the world with this Bluetooth enabled optical mouse. Features a modern and ergonomic design with soft UV coating. Compatible with both Mac and Windows OS. Large imprint area, and individually packed in retail case. 2 AAA batteries not included.



Available  
Colors



### Port Authority® Basic Large Duffel Bag

Product Code #BG980

- 600 denier polyester canvas
- Large center opening for easy packing
- Interior zippered pocket
- Front zippered pocket for easy decoration
- Zippered end pouch for shoes, towels or gear
- Built-in bottom board for shape retention and strength
- Detachable, adjustable, padded shoulder strap



### Shortshot Pocket Tee

Product Code #GKM16

- Pre-shrunk, ring spun cotton
- Generous fit
- Side seams to minimize twisting
- Double-needle top-stitching on main seams
- Taped neck seam for comfort
- Screen print neck label
- Front chest pocket

\$10-\$20

\$10-\$20



### Longshot Pocket Tee

**Product Code #GKM23**

- Pre-shrunk, ring spun cotton
- Generous fit
- Side seams to minimize twisting
- Double-needle topstitching on main seams
- Taped neck seam for comfort
- Screen print neck label
- Front chest pocket
- Knit cuffs and collar



#### Available Colors



### Nike Golf Mesh Back Cap II

**Product Code #889302**

Comfort, style and function converge in this structured, mid-profile design. A contrast underbill reduces sun glare, while the Swoosh Flex sweatband ensures exceptional fit. The contrast Swoosh design trademark is embroidered on the bill and center back. Made of 84/14/2 nylon/cotton/spandex.



### Carhartt Deluxe Lunch Cooler

**Product Code #358100B**

- Rugged Poly with Rain Defender® durable water repellent prevents dirt and stains
- Insulated main compartment to keep you lunch cool, separate insulated top compartment to separate food, front zippered pocket is perfect for condiments and utensils, shoulder strap and top handle for easy carrying
- Holds 6 cans or bottles



#### Available Colors



### adidas Golf Lightweight Cotton Front-Hit Cap

**Product Code #A626**

- 60% cotton, 40% polyester
- Washed soft lightweight cotton
- UV protection
- Relaxed crown
- Moisture-wicking sweatband



#### Available Colors



### R-Active Lite Adjustable Snapback Fishing Cap

**Product Code #805**

- Fabric: Lightweight Performance
- Visor: Precurved
- Shape: Casual Unstructured
- Sweatband: Stay Dri Performance



#### Available Colors



### Camo Voyager Duffle

**Product Code #PC850H**

The Camouflage Voyager Duffle Bag in Realtree APX is made of our tough 600 Denier polyester and has a large main compartment, zippered front pockets, utility "D" ring, adjustable padded carry strap and a web carry handle with wrap.







### Floating Outdoor Bluetooth Speaker

**Product Code #7198-08**

The versatile design allows it produce crystal clear sound while floating peacefully in a body of water. With an IPX7 waterproof rating you don't have to worry about water interfering with your entertainment. Bluetooth working range is 10 meters (33 feet). Micro USB Charging Cable included.



Available Colors



### Rugged Waterproof Cooler Bag

**Product Code #3599**

- Made Of 45C PVC Tarpaulin
- PVC Lining With EPE Foam Insulation
- Water Resistant Zippered Main Compartment
- Front Pocket
- Detachable/Adjustable Shoulder Strap And Web Carrying Handles With Hook And Loop Closure Comfort Grip



Available Colors



### Arch Clip Worklight

**Product Code #CPXR**

- Powered by 20 SMD light bulbs and a 1 Watt bulb
- Lightweight ABS plastic.
- Includes an On/Off power button a magnet on the back to adhere to metal objects and clip.
- Comes with three AAA batteries.



### Camo Field Bag

**Product Code #FBAPX**

The Camo Field Bag in Realtree APX has 8 external pockets for all your needs. Portioned and lined main compartment, detachable insulated drink holder, adjustable and detachable shoulder strap, and heavy duty rubberized carry handle.



### Camo Gear Bag

**Product Code #DNDAPX**

The Camo Gear Bag in Realtree® APX camo is the perfect companion for the weekend. With dual zippered top compartment, large front and end pockets you can get to your adventure with all your gear in no time. Stash away all the vitals in the built-in organizer that includes an ID card holder and cell phone pocket.

### Camo Cub

**Product Code #CUBMAX-5**

Built with our strongest nylon and toughest webbing the Cub is built to last. The main compartment is designed with a double heat sealed PEVA No-Leak lining to ensure your drinks stay ice cold. The Cub comes complete with removable shoulder strap and a handy front pocket.



### Ultimate Camo Cooler

**Product Code #MXCL20-5**

The Ultimate Camo Cooler in Realtree MAX5 Camo is great when you want enough drinks to last all day. With a large main compartment that can hold 20 cans plus ice and a dry compartment on top. It comes with our 5 year no-leak guarantee, heavy duty padding throughout, and heavy duty zippers and pulls.



### XL Utility Cooler MAX5

**Product Code #XLCLMAX5**

No matter what type of hunting you do, this cooler is perfect for your next trip. Sit in your blind for hours stocked with 36 cans plus ice and plenty of pockets to everything else.



### Ultimate Camo Backpack Cooler

**Product Code #MXBPCL-5**

The Cooler Backpack in Realtree MAX5 Camo is built to keep your hands free, all while carrying a ton. With it's double heat sealed PEVA no-leak liner that holds 20 cans plus ice, two mesh side pockets, and large front pocket, and extra padding in the shoulders and back, you can carry the party anywhere.





### Ultimate Camo Traveler

Product Code #MXTVL-5

The Ultimate Camo Traveler in Realtree MAX5 Camouflage is made of our toughest 600 Denier Polyester and features 5 external pockets, a "U" shaped top opening, an oversized main compartment, removable shoulder strap with pad and a padded handle wrap.



### Carhartt Force® Cotton Delmont Camo Long-Sleeve T-Shirt

Product Code #101767

Durable, midweight 5.75-ounce Realtree Xtra® plaited cotton/poly blend that's built to work. FastDry® technology wicks away sweat for comfort so you can stay focused on your day and Stain Breaker® allows stains to wash out easily. Raglan sleeves increase range of motion for less restriction. Left-chest pocket keeps items close at hand



### 24 Can TacPack™ Cooler Bag

Product Code #CB111

- 24 can, 840D insulated cooler bag.
- Featuring a wide top zippered opening for easy access, side zippered pockets.
- Two front elastic pockets to fit water bottles and Velcro pocket to provide extra storage.
- Shock cord, padded handles and an adjustable/detachable shoulder strap that adds convenience and comfort.



### Urban Peak® Quest 24 Can Cooler Bag

Product Code #CB128

- 10mm foam insulation, a heat sealed leak resistant liner, constructed of 1680D, and Diamond Dobby
- Large main zippered compartment, front zippered pocket and two side mesh pockets for added storage
- Top shock cord, padded Velcro handle and removable/ adjustable padded shoulder strap



### 55pc Tool Set with Tri-Fold Carrying Case

Product Code #TS23

Includes Needlenose Pliers, Utility Knife, Adjustable Wrench, Philips Flathead Screwdrivers, Magnetic Bit Drive, and 24 Piece Bit Set, 8 Piece Allen Wrench Set, 9 Piece Ratchet Set, 4 Precision Screw Drivers, Level, 2 Clamps and 10ft Tape Measure



### 36 Can Soft Tabletop Bucket Cooler

Product Code #228096

The Coleman® 36 Can Soft Tabletop Bucket Cooler is great for those afternoon picnics or gatherings. Set on a tabletop for easy access to your food and beverage. The included bottle opener makes for opening beverages much faster.



### Port Authority® Camo Xtreme Backpack

Product Code #BG207C

- 600 denier polyester printed canvas with 600 denier polyester canvas accents
- Hydration port at top
- Main compartment with dedicated padded laptop sleeve/hydration pouch
- Air mesh padded back panels
- Ergonomic air mesh padded shoulder straps
- Sternum chest strap



### Waterproof Explorer Backpack

Product Code #3855

- Made Of 250D PVC Tarpaulin
- 35 Liter
- Adjustable Padded Shoulder Straps And Web Carrying Handle
- Front Zippered Pocket
- Roll Top Closure With Adjustable Side Straps
- Waterproof Heat Welded Seams



Available Colors



### Hugo Copper Vacuum Insulated Tumbler 20oz

Product Code #88183

Durable, double-wall stainless steel vacuum construction with copper insulation, which allows your beverage to stay cold for 24 hours and at least 8 hours for hot beverages. The construction also prevents condensation on the outside of the tumbler.



**Virtue Triple Output LED  
(CREE® XM-L T6)**

**Product Code #FL120**

- Armed with 480 lumens
- 5 modes which include 3 selectable light levels, strobe and an S.O.S. mode
- Equipped with a pocket/belt clip and lanyard
- Comes with three AAA batteries.



**USB Rechargeable Triple  
Output LED**

**Product Code #FL161**

- High powered rechargeable flashlight
- Features 5 modes which include 3 selectable light levels, strobe and an S.O.S. mode
- To adjust the beam, the flashlight utilizes a push/pull head
- Comes with USB charging cable and a pocket/belt clip
- Includes one rechargeable battery



**Roadside Safety Flashlight**

**Product Code #FL83**

- Aluminum constructed roadside safety light.
- Push button action yields one Watt spotlight, 18 LED's for perimeter lighting or 9 red flashing LED lights for emergencies.
- Magnetic bottom provides adhesion to car and other metal surfaces.
- Includes three AAA batteries.



**Nighteye Dual Output LED  
(CREE® XR-E Q5 5 Watt)**

**Product Code #FL94**

- Large diameter head and tactical design produces a tightly focused beam with enough surround lighting for peripheral vision for a range of up to 150 meters.
- The anodized Aluminum body with break resistant lens is dust proof and weather resistant to withstand virtually all weather/work conditions.



**Executive Super USB Gift Set**

**Product Code #GFT1090**

*Dual-Zippered Hard Black Leatherette Case; Mini Matching Padded Mouse Pad; 2 Black Retractable Cords; Black Leatherette 3-Port Mini Hub; Slim Black Leatherette Optical Mouse And Attractive Black Sharpen-Like Patterned Leatherette And Silver Ballpoint.*



Available  
Colors



**Prudhoe Bay Siku Cooler**

**Product Code #PBCCT**

*The Prudhoe Bay Siku Cooler Tote is a must for any outing! Durable, yet soft, 20 oz. washed canvas gives a classic look and feel. It has a large slip pocket on the front and fully lined extra thick closed cell insulation. The design includes metal hardware, removable shoulder length strap, zipper closure on main compartment.*



**Prudhoe Bay Cub Cooler**

**Product Code #PBCUB**

*The Prudhoe Bay is built with our strongest nylon and toughest webbing the Cub is built to last. The main compartment is designed with a double heat sealed PEVA No-Leak lining to ensure your drinks stay ice cold. The Cub comes complete with removable shoulder strap and a handy front pocket.*



**Clip Grip Cree® Spotlight (3W)**

**Product Code #SLL-5553XP**

- 3.7V 2Ah Lithium-Ion battery runs up to 5 hours on a single charge, 100 Lumens brightness with 200m / 640 ft. beam distance
- Strong grip clip with rubber safety bumper guards for hands-free operation, 180 degree swivel head focuses beam in any direction, On/Off switch and charging indicator
- Includes AC & DC adapters for charging.



Available  
Colors



**Squid MAX 5000 MAH  
Powerbank**

**Product Code #XP5150**

*Portably And Safely Charge Devices With The 5000Mah Squid Max Powerbank; Fully Lit Epoxy Panel Makes Logos Shine! Attaches Securely To Your Smart Phone Or Tablet With Dust Proof Silicone Suction Feet; 2.1A Output; Overcharge Protection; Rechargeable Li-Ion Grade A Non-Recycled Battery; Micro Usb To Usb Cable Included.*



Available Colors



### Original Hooded Sweatshirt

Product Code #SZ101

- Two-needle stitched main seams
- Double layered three-piece hood with drawstring
- Oversized front pockets
- Knit cuffs and waistband
- Nylon front zipper
- Reinforced bartacks at stress points
- Media pocket



### AA Camo Mini MagLite® with "Cougar" Pocket Knife

Product Code #M2AC-7643

MagLite is 5 3/4" long and in traditional leaf camo design. Knife has 4" long handle and 3" black stainless steel blade. Package includes 2 "AA" batteries and presentation box.



### 26 in. Deluxe Duffel

Product Code #GP03029

- Spacious main compartment.
- Padded carrying handle.
- Detachable/adjustable padded shoulder strap.
- Shoe pocket with zipper closure.
- Zippered front pocket.
- Shoe tunnel with zipper closure.
- Side grab handles.



### Newport Duffel

Product Code #GP03048

- Large front pocket
- Spacious main compartment
- Dual carry handle with grip closure
- Large side zipper pockets
- Padded adjustable removable shoulder strap
- Bottom feet



### CHASER 27 OZ

Product Code #Orca Chaser

- The ORCA Chaser's double walled vacuum sealed body ensures that your ice will stay frozen and your drink will stay strong.
- 18/8 stainless steel double vacuum sealed body.
- Tritan® polymer clear lid
- 7" height
- 27 fluid ounce capacity



### Boulder Waterproof Outdoor Bluetooth Speaker

Product Code #7199-85

The 6 Watt output and Digital Sound Processor is capable of filling any location with quality sound. The Boulder has a waterproof rating of IP66. Includes Micro USB Charging Cable. Bluetooth working range is 10 meters (33 feet). Enjoy up to 6 hours of music at max volume on a single charge.



Available Colors



### totes® Stormbeater™ Golf Stick Umbrella

Product Code #FT820

- Windproof double canopy resists inversion
- Vented
- Fiberglass shaft and rib construction offer superior durability
- Push button automatic open
- Comfort grip handle
- Totes® lifetime warranty



### Port Authority® Camouflage Colorblock Sport Duffel

Product Code #BG99C

- 600 denier polyester canvas with 210 denier polyester lining
- D-shaped zippered entry for easy access in main compartment
- Two large zippered end pockets
- Two exterior zippered pockets on front
- Padded handle
- Detachable, adjustable shoulder strap



### Muskoka Fall™ Dual Output LED Flashlight

Product Code #FL122

- Large diameter head with tactical design that includes a defense bezel
- Produces a tightly focused beam with enough surrounding light for peripheral vision for a range of 150 meters
- Excellent flashlight for search/spotlight applications





**Blaze 5 Pc BBQ Set**  
**Product Code #BBQ42**

- Includes a spatula, tongs, cutting knife, fork and Silicone sauce brush.
- Feature a large eyelet on the top of each tool to allow you to hang the BBQ utensils when not in use.
- All contained in an attractive carrying case with handle for easy transport.



**Hunt Valley® 10x25 Excursion Binoculars**  
**Product Code #0045-32**

With a Field of view of 315 feet at 1,093 yards, 10x25mm (power x object diameter). These binoculars make it easy to see objects at a distance. The slim design of the binoculars and the carrying case make these binoculars easy to carry on your next expedition or hunt.



**Grill Master 3pc BBQ Set**  
**Product Code #1400-81**

Grill Master three piece set includes the essentials for a successful barbecue. Steel tongs, BBQ fork and spatula are stored in a sturdy metal-trimmed case with handle and two-latch closure.



Available  
Colors



**62" Cutter & Buck® Vented Golf Umbrella**

**Product Code #2050-38**

Exclusive Cutter & Buck® design. Full size golf umbrella. Manual opening with large vented 62" Pongee canopy with matching color case. Alternating panels of vibrant colors and white command attention. Case includes shoulder strap. All fiberglass lightning resistant construction. Lightweight and ergonomic Cutter & Buck® handle.



Available  
Colors



**Encore Compact 20 Can Speaker Cooler**

**Product Code #2600-02**

Zippered leak-proof main compartment holds up to 20 cans. Features water-resistant speakers compatible with most iPhone®, iPod® and other MP3 players. Zippered electronics pocket in front includes headphone port. Uses four AA batteries (not included). Adjustable shoulder strap. Insulated PEVA lining.



Available  
Colors



**Continental TSA 15" Computer Backpack**

**Product Code #3450-99**

Laptop-only section unfolds lying flat on X-ray belt expediting airport security. Holds most 15" laptops. Zippered main compartment. Zippered front pocket with deluxe organization panel and key ring. Zippered top pocket with organization and earbud port. Side pockets. Adjustable padded shoulder straps and carry handle.



**Triton Weekender 24" Carry-All Duffel Bag**

**Product Code #5300-80**

Large zippered main compartment. Zippered side pocket with organizer and separate zippered shoe compartment. Zippered front pocket with mesh organizer. Bottom board with feet. Padded, detachable, adjustable shoulder strap.



**High Sierra® 15-Function Multi-Tool**

**Product Code #8051-02**

15 function tool includes can and bottle opener, Phillips head screw driver, 3 driver bits (2mm-4mm bits), three blades (3mm-5mm), serrated blade, pliers, needle nose pliers, wire cutter, and dual-function file. High-end non-stick easy care coating.



**High Sierra® Impact King's Camo Backpack**

**Product Code #8052-33**

The bag features a large front-load main compartment. Portable media player pocket with molded headphone port. Large gusseted front pocket for accessories. Organizer with pen pockets and key fob. Contoured, padded shoulder strap with handy cell phone pocket. Padded back panel and grab handle.



Available Colors



**Marino 50-Can Rolling Cooler**  
Product Code #SM-7303

PEVA insulation. Large zippered main compartment. Zippered front pocket. Two large side mesh pockets for extra storage. Retractable telescoping handle extends 21". Inline skate wheels. Bottom board. Detachable, adjustable padded shoulder strap. Collapsible with Velcro straps for easy storage.



Available Colors



**Rhythm Bluetooth Speaker**  
Product Code #Rhythm

Designed with portability in mind, the Rhythm delivers a powerful stereo sound at an affordable price. It's full metal housing provides a large laser or imprint area to promote your company's message loud and clear.



Available Colors



**Port Authority® Microfleece Jacket**  
Product Code #F223

For cool-to-cold weather, this lightweight microfleece jacket delivers warmth without unnecessary bulk. Perfect alone or layered, it's a great value and it features clear coil zippers with dyed-to-match chain stitching and taping. (Grey chain stitching on White.) An anti-pill finish helps preserve a clean appearance.



Available Colors



**Sport-Tek® Sport-Wick® Fleece 1/4-Zip Pullover**  
Product Code #F243

Our Sport-Wick technology transforms anti-static fleece into an excellent warm up and cool down option. Your top layer releases moisture from inner layers, while keeping your skin comfortably dry.



**Men's Clique Basics Fleece Pullover Hoodie**  
Product Code #MRK02000

50% polyester, 50% cotton, The Clique Basics Fleece Pullover Hoodie takes you from chilly mornings through night practice. Constructed from air jet yarn, this comfy and supremely printable fleece was designed for active adults, Weight 7.8 oz



Available Colors



**Pioneer Sport Duffel**  
Product Code #4710

- Front zippered pocket with two interior pockets for organization
- Front zippered easy-access smartphone pocket
- Large U-shaped opening to main compartment
- Top zippered pocket



**All-Purpose Utility Case**  
Product Code #3853

- This ultra-versatile utility case keeps you organized with multiple storage options
- Metal key fob and exterior clip to hook and secure tape measure
- Side Velcro pocket includes plastic container to store and organize tools and accessories, tape measure and tools not included
- Molded handle grip



Available Colors



**Seated Cooler Backpack**  
Product Code #P7357

The front zipper compartment has a large cooler that is foam padded and PEVA lined to carry for up to 12 cans. The main compartment on the backpack is spacious enough to carry a change of clothes and has a padded sleeve for a tablet. The outside frame is constructed with heavy duty metals which can support up to 280lbs.



**“AA” Mini-Mag-Lite® with Multi-Function Mini Tool**  
Product Code #M2A-YC5

Comes with 2 “AA” batteries. Tool is 2 1/2" closed. Our multi-tool has a scissor.



**Giant Rolling Cooler**  
Product Code #3119-

- Made Of 600D Polyester
- PEVA Lining
- Web Carrying Handles
- Retractable Auto Lock Handle
- Front Zippered Pocket
- 2 Side Pockets
- Bungee Cord Storage On Top
- Holds Up To 48 Cans



**Deluxe Carrycase Compressor Kit**

Product Code #Camo Orca Chaser-

- Powerful 260-PSI compressor quickly inflates any size tire
- Operates from vehicle power outlet socket with built-in pressure gauge • Removable light illuminates your work area and warns oncoming traffic
- 3 Adapters for inflating tires, bicycles, pool rafts, sports balls, etc.



**MOSSY OAK BREAKUP COUNTRY 27OZ CHASER**

Product Code #ORCCHA27MOB/BLKHD

Whether you are going to work, the ball field, a tailgate, into the woods, down to the dock, or to a party, our stainless steel cup will get you there with an ice-cold or piping hot beverage. The ORCA Chaser's double walled vacuum sealed body ensures that your ice will stay frozen and your drink will stay strong.



**LSU 27OZ CHASER PURPLE/GOLD**

Product Code #ORCCH27PU/GOLLSU

Show your Tiger support with the ORCA Chaser. Keeps your beverages hot or cold down on the bayou—no matter the temperature! ORCA's new officially licensed collegiate tumblers will get you to the tailgate or your sofa to watch the game, with an icy cold (or piping hot) beverage.



**TOUGH TEXTURE BLACK 27OZ CHASER**

Product Code #ORCCHA27TTBK

The ORCA Chaser believes in getting you there with an ice-cold (or piping hot) beverage. The ORCA Chaser's stainless steel double walled vacuum sealed body ensures that your ice will stay frozen and your drink will stay strong, while its clear lid makes it easy to see when it's time for a refill.



Available Colors



**Urban Peak® Cube 24 Can Cooler Bag**

Product Code #CB129

- Made of 600D Dobby, new FDA approved thick inner liner and 20mm double foam insulation
- Main zippered compartment, front zippered pocket for added storage, Velcro handles and adjustable/detachable padded shoulder strap.
- Comes with a Stainless Steel bottle opener



**DRI DUCK Men's Explorer Colorblock Full-Zip Microfleece**

Product Code #7347

- 5.5 oz 100% Polyester Microfleece
- Anti-static finish
- 1-sided brushed, anti-pill finish
- Contrast color on sleeves, shoulders and pocket welts
- Stand-up Collar
- Set-in sleeves
- Full Zip



Available Colors



**Port Authority® Active Hooded Soft Shell Jacket**

Product Code #J719

- 1000MM fabric waterproof rating
- 1000G/M2 fabric breathability rating
- Three-panel hood with adjustable locking drawcord
- Reverse coil zipper
- Zippered chest pocket
- Front zippered pockets
- Elastic binding at cuffs
- Open hem with adjustable locking drawcord



Available Colors



**Port Authority® Active Soft Shell Jacket**

Product Code #J717

- 1000MM fabric waterproof rating
- 1000G/M2 fabric breathability rating
- Zip-through cadet collar with chin guard
- Reverse coil zipper
- Front zippered pockets
- Elastic binding at cuffs
- Open hem with adjustable locking drawcord





Available Colors



### Port Authority® Enhanced Value Fleece Full-Zip Jacket

Product Code #F229

- 13.8-ounce, 100% polyester
- Twill-taped neck
- Contrast reverse coil zipper
- Chin guard
- Bungee cord zipper pulls
- Front zippered pockets
- Open cuffs with contrast binding
- Open hem with drawcord



Available Colors



### Sport-Tek® Sport-Wick® Mineral Freeze Fleece Colorblock Hooded Pullover

Product Code #ST231

- 100% polyester
- Anti-static
- Three-panel hood
- Sublimated Mineral Freeze print on hood and sleeves
- Solid self-fabric hood lining
- Solid dyed-to-match drawcords with metal tips
- Two-tone sleeves



Available Colors



### Port Authority® Competitor™ Jacket

Product Code #JP54

A preferred classic, the Competitor™ Jacket is a lightweight alternative to the Challenger™ Jacket (J754). With sporty style, this workplace and off-hours favorite has reinforced seams and sturdy Teklon® nylon to keep wind, rain and other elements at bay.



### Rechargeable Dual Output LED (CREE®XP-E R3 5 Watt)

Product Code #FL95

Output: 200 Lumens High, 75 Lumens Low  
The anodized Aluminum body with Titanium finish is deep etched to provide an all weather grip. Both dust-proof and water proof to 1 meter, this flashlight will perform in all weather conditions. Includes a rechargeable base with LED indicator and circuit protection which prevents the lithium battery from over-charging.



### Intense Triple Output LED (CREE® XM-L2-U2)

Product Code #FL142

- Anodized Aluminum body.
- Break resistant lens is dust proof and weather resistant
- Large diameter head and tactical design produces a tightly focused beam.
- tSoft touch power button can switch between high, medium, low output and to activate the strobe and S.O.S. feature.



### Cruiser 50 Can Rolling Cooler Bag

Product Code #CB146

- Made out of 600D Polyester and 840D Polyester Dobby
- Featuring a sturdy hard bottom for extra durability, front zippered pocket and two side mesh pockets
- Compression straps to reduce the bag size for easier storage
- Includes a telescopic handle.



Available Colors



### RoxBox™ Duet Bluetooth Speaker

Product Code #EL73

- Speaker is easy to connect using A2DP Bluetooth V3.0 EDR and an operating range of 10M/33 feet
- Turn any mobile device into a portable sound system. Built-in subwoofer that provides exceptional quality sound
- Built-in mic allows you to use it as a handsfree phone and is a perfect for conference calls.



### 129 Pc. Deluxe Household Tool Set

Product Code #TS34

- The 129 piece tool kit set contains 80 fastener kit, 6" diagonal pliers, 6" needlenose pliers, screwdriver handle, 6" adjustable wrench
- 20-bits, 8 metric and 8 imperial hex key wrenches, hammer, knife, 8" level, 4-precision screwdriver, PVC tape
- 8" crimping tool with wire cutter all housed in a blow-molded case.



Available Colors



### RoxBox™ Aqua Bluetooth Speaker

Product Code #EL77

Produces exceptional sound quality and can fit into any space, indoor or outdoor. IPX4 water resistant rating. Powered by V3.0 EDR Bluetooth technology. Listen at a range of 10m/33ft for up to 5 hours straight with a 2 hour recharge time. Features an LED light power indicator, a built-in microphone with button for hands-free calling, on/off button,



**Blaze 5 Pc BBQ Set**  
Product Code #BBQ42

- Constructed out of FDA Stainless Steel.
- Includes a spatula, tongs, cutting knife, fork and Silicone sauce brush.
- Feature a large eyelet on the top of each tool to allow you to hang the BBQ utensils when not in use.
- Includes elastic/reinforced hook and loop closures to keep all the utensils in place.



**Vigor Power Bank (9,000mAh)**  
Product Code #EL119

- Slim lithium polymer 9000mAh Grade A battery dual-output makes it convenient to charge two hand-held devices at once
- Can support both 1A (low) and 2A (high) to most mobile phones and tablets
- Can be recharged using our 12" Micro USB cable with data transmission



**Auto Safety Kit**  
Product Code #TS11

- 600D Nylon
- 21 piece case includes 300 Amp (10 gauge) jumper cables, reflective warning sign, 2 bungee cords, mylar blanket, flathead and Phillips screwdriver, siphon pump, 2 glow sticks, gloves, 50 PSI tire gauge, 8 piece Allen key set and flashlight (batteries not included)



**6AA Divide™ 750 Lumen LED Flashlight**  
Product Code #231344

The Battery Lock™ system on a Divide 750 Lumen LED Flashlight stops battery drain, so you'll have the power you need when you need it most. From your adventures up in the mountains or down by the river, take this flashlight anywhere and everywhere.



Available Colors



**Coleman® Oversized Cooler Quad Chair**  
Product Code #AC7004

- Poly-oxford seat with comfortable padding
- Hardened steel legs and frame
- Soft, PEVA-lined cooler in arm holds up to 4 cans plus ice
- Mesh cup holder and program pocket
- One year warranty
- Carry bag included



**Arctic Zone® 50 Can Outdoor Backpack Cooler**  
Product Code #3860-94

Zippered main compartment holds up to 50 cans. Zippered front pocket and multiple accessory pockets. Zippered nylux-lined media pocket located on the front. Removable, adjustable padded backpack straps. Can be stored in back pocket when not in use. Tote-style straps that feature a 13.25" drop height. Ultra Safe™ leak-proof, easy clean PEVA lining.



**Deluxe Folding Lounge Chair**  
Product Code #1070-55

Camp in ultimate luxury with this deluxe chair. Features a padded seat and chairback giving you extreme comfort with a built-in mesh head rest for ventilation. Includes cupholder and detachable valuables pocket. Carrying case included. Loading weight limit: 300lbs.



**High Sierra® Loop Backpack**  
Product Code #8050-39

Multi-compartment design. Zippered media pocket with headphone port. Two side mesh water bottle pockets. Hanging accessory pocket. Organizer with zippered mesh pocket, pen pockets and removable key fob. Yolk-style, S-shaped Vapel™ mesh shoulder straps with suspension system, cell phone pocket and integrated grab handle.



**High Sierra® 22" Switchblade King's Camo Duffel**  
Product Code #8052-34

King's Woodland Shadow® Camo Pattern is developed from real life conditions in thick wooded forests by balancing the colors and not creating a pattern that is too dark, therefore losing its effectiveness and breakup. The High Sierra® Switch Blade duffel features a large main compartment with U-shaped opening.



### 720P High Definition Action Camera

Product Code #7140-71

The HD action camera comes equipped with a 720p HD lense and a 2" LCD screen to capture the special moment. The action camera is capable of taking both pictures & video with crystal clear resolution. Along with the HD camera you will receive additional accessories, which include a waterproof case, helmet mount, and a handlebar mount.



### Oversized Folding Chair (500lb Capacity)

Product Code #1070-79

This extra-wide, extra-strong folding chair is ideal for a long day on the sidelines or enjoying a drink by the grill. With an extra sturdy steel frame and durable 600D fabric this chair has a loading weight limit of 500 lbs. This XL chair had two mesh cup holders and folds compactly for easy transporting and storage in the included carry bag.



### Game Day Speaker Chair

Product Code #1070-80

This folding chair with integrated speaker has got to be the best summer gadget! Ideal for spending the day on the sidelines or by the grill. Simply connect the speaker with a smartphone or MP3 with the included 3.5mm audio cable, place the media device into the tech holder, then sit back and relax while listening to music. Features a mesh cup holder.



### OGIO® - Crunch Duffel

Product Code #108085

- 300D dobby nylon/600D poly
- Large main compartment
- Side shoe pocket
- Front-faced zippered and secondary side storage pockets
- Detachable, adjustable, padded shoulder strap
- Custom-molded interlocking handle



### OGIO® - All Terrain Duffel

Product Code #711003

- 600D poly/420D dobby poly
- Large main compartment with U-shaped opening
- Ventilated shoe compartment
- Front storage pocket with mesh dividers
- Fleece-lined digital media/audio pocket with headphone exit port
- Custom-molded interlocking handle



### OGIO® Camo Big Dome Duffel

Product Code #108087C

- 600D poly/420D dobby poly
- Front zippered pocket
- Ventilated shoe compartment with grab handle
- Detachable, adjustable, padded shoulder strap
- Fabric-wrapped handle



### Igloo® Juneau Backpack Cooler

Product Code #9088

- Enhanced insulation
- Leak resistant, heat-sealed antimicrobial liner
- Removable, dishwasher safe liner
- Zippered closure to insulated main compartment
- Zippered mesh compartment ideal for storing ice packs
- Front zippered pocket with additional mesh pockets



### Igloo® Diesel XL Cooler

Product Code #9058

- Enhanced insulation
- Antimicrobial liner
- Dual zippered opening with folding lid and
- Velcro closure for easy access
- Aluminum pull handle
- Front zippered pocket
- Side mesh water bottle pocket
- Side storage loops



### Samsonite Andante 22" Wheeled Duffel

Product Code #95018

- Durable casual duffel for easy travel
- The large U-shaped opening makes for easy access to packed travel essentials
- Lightweight design and smooth rolling wheels for effortless mobility
- Multiple organization pockets offer areas to store writing instruments, a smartphone and other accessories





Available  
Colors



### Pelican™ Traveler 32 oz. Hot / Cold Tumbler

Product Code #PL1001

The Pelican Traveler 32 oz. tumbler will keep your hot drinks hot and your cold drinks cold. It features 18/8 stainless steel double-wall vacuum insulation, copper-plated inner wall for extreme hot and cold retention. The tumbler will keep drinks hot for up to six hours and keep ice for up to 24 hours.



### Emergency Light & Tool Kit

Product Code #GT6009

Emergency light tool kit features an adjustable angle flashlight, safety flashlight, adjustable wrench, pliers, sockets and ratchet screwdrivers, 8 hex wrenches, hammer, car adapter, carry handle and sturdy ABS plastic construction.



### Camo Stand-Up Cooler

Product Code #GR4607

Camouflage cooler has a folding steel stand and 40 can capacity. Made from durable 600D material, the zippered main compartment features heat-sealed PEVA lining, two side handles, 2 zippered pockets, T-bar zip pulls, carry bag and a hook and loop top flap for easy access to the cooler contents.



Available  
Colors



### Nike Golf - Dri-FIT Micro Pique Polo

Product Code #363807

Stay cool when things heat up. Engineered with Dri-FIT fabric which provides moisture management technology. This comfortable micro pique polo has an exceptionally soft hand. The design features a flat knit collar, three-button placket, open hem sleeves. The contrast Swoosh design trademark is embroidered on the left sleeve. Made of 100% polyester.



Available  
Colors



### Clique Men's Narvik Colorblock Softshell

Product Code #MQo00056

96% Polyester, 4% Spandex, Microfleece-lined colorblock softshell, Waterproof to 1,000mm, Reverse coil zipper at front center & along side pockets, Elasticized cuffs, Angled zip chest pocket, Locker loop



Available  
Colors



### Volunteer Sweater

Product Code #8000

The Volunteer features a shell constructed of windproof/water resistant polyurethane-coated medium-weight Toughlan® nylon, and is lined with super soft 6 oz. lightweight PANDA FLEECE. Also features two front pockets with zippers and one inner right chest pocket with zipper. Double-stitched seams for added strength. Raglan sleeves.



### Giant Duffel Black TAA

Product Code #CT9931

For large volume purchases use the "Add to Quote" button below to create a quote list for the products you are interested in receiving more information. Once your list is complete, click the "Quote List" button in the menu to view and submit your list to our customer service team.



Available  
Colors



### 9920 UNISEX Harbor Corduroy-Fleece Jacket

Product Code #9920

Look cool and stay comfortable with its corduroy pattern fleece exterior and microfleece interior.

- Two front zip pockets
- One zip pocket on left arm
- Draw cords with grommet on each side of waist
- Elastic sleeve cuffs



### Pocket Bluetooth Speaker

Product Code #Pocket BT

Features powerful dual bass port for superior sound quality. This trendy and portable speaker is built with 1200 mAh rechargeable battery for 8 hours of continuous playback. It has a waterproof IPx4 index and a 10m connectivity range, great for use by the pool or camping trips! Each speaker comes packaged in retail gift box, with 3.5mm audio connector and micro usb charge cable.



### Big Game 24in Duffel

Product Code #GP03061

- Side pocket
- MOLLE loops
- Two end mesh pockets
- Two end zippered pockets
- Large spacious compartment
- Adjustable/removable padded shoulder straps
- Bottom board
- Padded handle



### Port Authority® Enhanced Value Fleece Full-Zip Jacket

Product Code #1174

- 13.8-ounce, 100% polyester
- Twill-taped neck
- Contrast reverse coil zipper
- Chin guard
- Bungee cord zipper pulls
- Front zippered pockets
- Open cuffs with contrast binding
- Open hem with drawcord



### Big Game 19in Backpack

Product Code #GP00010

- Front zippered pocket
- Removable large mesh drawstring utility bag
- Two side mesh pockets
- Two front pockets
- Main compartment
- Padded laptop compartment
- Fits 17" laptop
- Handle loop



### Newport Backpack

Product Code #GP00047

- Padded top carry handle
- Large front zipper opening with multi pocket organizer inside
- Additional front zipper pocket
- Spacious zipper compartment with divider
- Check point friendly laptop sleeve for 15" laptop
- Padded adjustable shoulder straps



### Weber Essential Burger Kit

Product Code #BK16

Enjoy your burgers more with the Weber Burger Kit. The Weber Essentials Burger Kit helps you on your journey to Burger Brilliance! It includes one Burger Press, one Weber Essentials Stainless Steel Spatula, one Weber Gourmet Burger Seasoning shaker and an amazing set of Quick Tips.



### High Sierra Loop Day Pack

Product Code #53646

Large, multi-compartment design. Dedicated TECH SPOT tablet computer sleeve (12.5 x 11 x 0.75 in.). Dedicated media pocket. Attach extra gear with monster hook and bottom straps. Adjustable side compression straps. Mesh beverage pockets. Hanging accessory pocket. Premium organizer with multiple pockets and key fob.



### Fishing Tackle Bag

Product Code #MXFTB-5

Our Fishing Tackle Bag in Realtree MAX5 Camo is perfect for your next fishing trip. Built with over-sized heavy duty zippers, closed cell foam for protection, bottom board for stability, this bag is tough! It's large main compartment comes fully lined and a ton of pockets, including two tackle boxes. Finally, it has a removable padded shoulder strap.



### LED Lenser High Power RGB + White

Product Code #T2QC

4" Long. Features a texture handle for extra grip. 4 different light colors. White lights lends itself to seeing best at night. Red light will maintain your night vision, as well as being useful for signaling as well, and also for following blood trails or for uniformed professionals. 3AAA batteries.



### LED Lenser® P3

Product Code #P3AFSP

The P3 flashlight is small and lightweight, with a handy clip, and requires only one AAA battery for hours of light. In addition to these features the P3 has the Rapid Focus System™, allowing you to transition from a circular, spill-beam to a focused, long-distance beam quickly with just one-hand.



**Binolux® "Extreme" Binocular**  
Product Code #5085

Very powerful, 16 x 32 roof prism compact binocular puts you in the center of the action. Rugged metal body with black rubber coated grips. 16 Power gives you incredible visual reach to see distant objects. Comes with case. Imprint on binocular or case.



Available Colors



**Columbia Men's Crescent Valley Quarter-Zip Fleece**

Product Code #6426

- 4 oz., 100% polyester featherweight microfleece
- Omni-Shade™; UPF 50 sun protection
- Abrasion-resistant chin guard
- Embroidered Columbia logo on upper right sleeve



**Boulder Waterproof Outdoor Bluetooth Speaker**

Product Code #7199-85

Enjoy your favorite music regardless of your location. Take the Boulder outdoor speaker with you to the pool, on your hike, or to your next house party. The 6 Watt output and Digital Sound Processor is capable of filling any location with quality sound. The Boulder has a waterproof rating of IP66. It plays music up to 6 hours.



**Max-5 "BIG UN" Camo Camp Chair**

Product Code #XRMAX-5

- Realtree MAX-5® Pattern
- Wide, wing seat designed
- Heavy duty steel frame
- Two built-in cup holders
- Heavily padded seat and back
- Solid 600D zippered carry bag
- Tag rated at 400lbs.
- Independent lab tested over 500lbs.



**Ultimate Camo Backpack**

Product Code #MXBPD-L-5

- Realtree Max-5® came pattern
- 6-00D poly with rip-stop polyester accents
- Security organizer pocket on back — no access from front!
- Smartphone pouch, ear bud port, ID & credit card pouches, etc
- Two large inside pockets with small zippered pockets



Available Colors



**Team 365 Adult Excel Mélange Performance Fleece Hoodie**

Product Code #TT36

- Shell: 7.08 oz/yd2 / 240 gsm, 100% polyester mélange fleece with moisture wicking performance
- Lining: 100% polyester tricot in hood
- Self fabric cuffs with thumbholes
- Hand warmer pouch pocket
- Contrast coverstitch details throughout



Available Colors



**Carhartt Force® Ridgefield Solid Short Sleeve Shirt**

Product Code #102417

- 3-ounce 60% polyester/40% cotton sheeting to keep you cool
- FastDry® technology wicks away sweat for all-day comfort
- Life is a full-contact sport, and Stain Breaker® allows stains to wash out easily
- Protect your neck from the sun: double-layer collar stands up for extra protection



Available Colors



**Midweight Hooded Logo Sweatshirt**

Product Code #k288

10.5-ounce, 50% cotton/50% polyester blend; Heather Gray fiber content is 70% cotton/30% polyester. Attached three-piece hood with draw-cord closure. Front handwarmer pocket. Stretchable, spandex-reinforced rib-knit cuffs and waistband. Carhartt-strong triple-stitched main seams. Carhartt signature logo printed on left sleeve.



Available Colors



**Carhartt Force® Ridgefield Plaid Short Sleeve Shirt**

Product Code #102419

- 3-ounce 60% polyester/40% cotton sheeting to keep you cool
- FastDry® technology wicks away sweat for all-day comfort
- Life is a full-contact sport, and Stain Breaker® allows stains to wash out easily
- Protect your neck from the sun: double-layer collar stands up for extra protection





**GameGuard Sweatshirt**  
Product Code #4001CHO

*Incredibly soft yet rugged, you'll find yourself wearing the pull-over all the time. Constructed from a poly-cotton blend, the knit exterior surface resists burrs, pilling and debris while the brushed fleece interior provides exceptional warmth and comfort. Includes a front kangaroo pocket for storing your hunting license, phone or keys.*



**GameGuard Backpack**  
Product Code #2010GGC

*Our strap design ensures proper posture and greatly reduces fatigue over long hikes. Filled with storage pockets, including a padded laptop sleeve, you'll have a place for all of your essentials, while keeping them organized and well protected. The weather resistant outer shell repels moisture, helping to keep your gear dry and safe.*



**GameGuard Cooler Bag**  
Product Code #GameGuard Cooler Bag-

*Featuring a 32-Quart, high capacity liner, you can easily fit 48 pre-chilled canned beverages, or 36 cans, plus two 10 lb. bags of ice. To help you lug all of those cans, we have also incorporated a rugged shoulder strap, with quick-release clips. Our high-capacity front pocket provides ample storage for utensils, and other gear.*



**GameGuard Olive Cooler Bag**  
Product Code #GameGuard Olive Cooler Bag-

*Featuring a 32-Quart, high capacity liner, you can easily fit 48 pre-chilled canned beverages, or 36 cans, plus two 10 lb. bags of ice. To help you lug all of those cans, we have also incorporated a rugged shoulder strap, with quick-release clips. Our high-capacity front pocket provides ample storage for utensils, and other gear.*



**Mesquite Cooler Bag**  
Product Code #GameGuard Mesquite Cooler Bag

*Featuring a 32-Quart, high capacity liner, you can easily fit 48 pre-chilled canned beverages, or 36 cans, plus two 10 lb. bags of ice. To help you lug all of those cans, we have also incorporated a rugged shoulder strap, with quick-release clips. Our high-capacity front pocket provides ample storage for utensils, and other gear.*



**GameGuard Shooter's Accessory Bag**  
Product Code #GameGuard Shooter's Accessory Bag

*Measuring just 17.5" wide, 9.5" deep and 8" tall, our accessory bag is compact yet incredibly versatile. Featuring three external pockets with wide zipper closures for improved access, a fully-lined interior with three internal pockets and a generous central storage compartment, enough room to carry ammo, gloves, binoculars or just about anything else.*



**GameGuard Rifle Case**  
Product Code #GameGuard Rifle Case

*Whether the gun you take into the field is brand new or has been passed down for generations, our Gun Cases offer dense, impact-resistant padding for outstanding protection. Combining an exterior accessory pocket, high-capacity bellows pocket, double reinforced handles, a rugged exterior and soft inner lining.*



**Caviar MicroFleece**  
Product Code #Caviar Micro Fleece

*MicroFleece Pullovers combine handsome styling with exceptional comfort. Constructed from premium lightweight fleece for excellent warmth retention without the bulk.*



**Columbia Men's Steens Mountain™ Full-Zip Fleece**  
Product Code #3220

- 7.4 oz., 100% polyester MTR filament fleece
- Elastic cuffs
- Adjustable drawcord at bottom hem
- Zippered hand pockets
- Embroidered Columbia logo on left chest



### Atlantis Waterproof Gear Bag

Product Code #GBW-1S

Constructed for maximum durability and versatility, our waterproof gear bags are designed to weigh less and keep your contents dry and safe - an excellent choice to store all your essentials for work or play.



Available Colors



### Beast of Burden Backback Duffel

Product Code #BC7102

Splash Proof 600D X 600D With Pvc Backing Cross-Weave Material Convertible Duffel. Features A Main Compartment With Ample Space And Removable Dividers For Customizable Organization; An Interior Pvc Wet Pocket That Separates Your Dry Belongings From Your Wet; 2 Interior Zippered Mesh Pockets; 2 Top Pockets.



### HD 720P Home Wifi Camera

Product Code #7140-72

Now no matter where you go you can watch live feed with the 720P Home Wifi Camera. Simply connect the camera to your wifi network. Once connected you can stream live video from the recommend App. From the App you can record video, takes photos, or use the camera as a mic. Compatible with any micro SD card up to 64GB.



Available Colors



### Carhartt® Signature 14" Tool Bag

Product Code #1889-01

Tools are your life. This 14" Carhartt Signature Tool Bag will treat them with respect. It's built from durable 1200D poly and is water repellent. It is equipped with 6 exterior pockets and 6 interior pockets to carry all your tools for the day. It has a metal frame which allows easy access into the large main compartment.



### New Connections 50 Can Rolling Cooler

Product Code #2550-50

Great for outdoor events. Zippered main compartment holds up to 50 cans. Zippered front pocket. Telescoping handle and inline skate wheels. Side carry handles for easy lifting. Insulated PEVA lining.



### Native Wooden Bluetooth Speaker

Product Code #7199-69

The sound of the Native Wooden Bluetooth speaker is as natural as the woods its derived from. It features two three Watt audio channels for premium quality sound and a built in music control on the speaker. The perfect speaker for at the house or on the go. Includes a micro usb to usb charging cable and a 3.5mm auxiliary cable. Enjoy up to 3 hours when fully charged.



### ifidelity Soundwave Bluetooth Speaker

Product Code #7199-18

Soundwave delivers pristine streaming audio from Bluetooth compatible devices like iPhone, iPad or Android OS devices. Play music, movies, and mobile audio as they were originally created in the studio, all within the palm of your hand. With the built-in microphone, Soundwave allows you to conference call on-the-go through your smartphone or by video chat programs like Skype, iChat or Google Talk.



### High Sierra® Tactic 17" Computer Backpack

Product Code #8051-49

This rugged compu-backpack stands out with its unique look and subtle pattern. Multi-compartment design features a padded interior Cushion Zone computer sleeve (holds a 17" laptop) as well as iPad/tablet. Large front zippered pocket to stash your belongings. Organizer compartment with multiple pockets, zippered mesh pocket and a key fob.



### High Sierra® Packable 30" tWheel-N-Go Duffel Bag

Product Code #8052-27

Versatile, lightweight wheeled duffel that rolls up and packs into its own drawstring pouch. It's two bags in one! Use it as a regular wheeled duffel or wear it like a backpack. Large main compartment with zippered opening. Handle straps convert into convenient backpack straps. Easy-access pocket keeps essentials close at hand.



### Urban Passage 25" Rolling Duffel Bag

**Product Code #8400-95**

Inline skate wheels for smooth rolling. Front zippered pocket with organizer. Drawstring mesh pockets for water bottles or accessories. Product packaging size may result in add freight charge.



### Prudhoe Bay Camo Canvas Duffle

**Product Code #LCDF APX**

Every outdoorsman deserves a travel bag that is practical and captures the essence of the wild. The Prudhoe Bay Camo Canvas Duffle in RealTree® APX features a massive 21"x13" main compartment, large internal zippered pocket for your accessories, imitation leather accents, and 3 exterior pockets for easy access.



Available Colors



### Urban Peak® Cube 48 Can Cooler Bag

**Product Code #CB130**

Made of 600D Dobby, new FDA approved thick inner liner and 20mm double foam insulation. Main zippered compartment, front zippered pocket for added storage, Velcro handles and an adjustable/detachable padded shoulder strap. Comes with a Stainless Steel bottle opener. FDA approved thicker liner that is (45C).



Available Colors



### Urban Peak® 28 Can Cooler Backpack

**Product Code #CB132**

Comes with our FDA approved thicker liner that is (45C) and can with stand wear and tear. Hefty foam insulation that doubles and may even triple normal soft sided coolers. Made of 600D Polyester. Features a main zippered compartment, front mesh pocket for added storage, two side slash pockets and top handle.



### 5 Pc. Deluxe BBQ Set

**Product Code #BBQ5**

- Elegant metal carrying case, with quality corner finishing and hinging.
- Includes spatula with built in serrated blade and bottle opener, tongs, fork, cutting knife and sauce brush
- Implements made with FDA compliant Stainless



### 30 Can Camo Roller Cooler

**Product Code #CB107**

Made of 600D Polyester with a heat sealed liner and a removable plastic liner for easy cleaning. Features a main zippered compartment to store up to 30 cans of soda. Zippered top compartment for dry storage with rubber grip handle, two side mesh pockets, and two front zippered pockets for extra storage.



Available Colors



### CornerStone® Heavyweight Sherpa-Lined Hooded Fleece Jacket

**Product Code #CS625**

- 23-ounce, 53/47 cotton/poly fleece bonded to 100% polyester sherpa fleece with DWR finish
- 2-ounce polyfill in sleeves for added warmth
- Hood with dyed-to-match drawcord
- Heavy-duty metal zipper
- Rib knit cuffs and waistband
- Front hand warmer pockets



### Port Authority® Camouflage Colorblock Soft Shell

**Product Code #J318C**

- 100% polyester woven shell bonded to a water-resistant film insert and a 100% polyester microfleece lining
- 1000MM fabric waterproof rating
- 1000G/M2 fabric breathability rating
- Zip-through cadet collar
- Reverse coil zippers
- Front zippered pockets



Available Colors



### Port Authority® Welded Soft Shell Jacket

**Product Code #J324**

- 100% polyester woven shell bonded to a water-resistant film insert and a 100% polyester microfleece lining
- 1000MM fabric waterproof rating
- 1000G/M2 fabric breathability rating
- Reverse coil zippers
- Full-length interior storm flap
- Zip-through cadet collar with chin guard





### OGIO® - Rogue Pack

**Product Code #411042**

- 600D poly/420D dobby poly
- Top-entry padded laptop compartment
- Fleece-lined valuables pocket
- Deluxe organization panel
- Dual side beverage/accessory holsters
- Padded back panel
- Ergonomic adjustable shoulder straps with adjustable sternum strap



Available Colors



### Port Authority® Challenger™ Jacket

**Product Code #J754**

- Teklon® nylon outer shell
- Vislon zipper
- Poly-filled body with heavyweight fleece lining for extra warmth
- Poly-filled sleeves with polyester lining
- Rib knit cuffs and waistband
- Slash zippered pockets, interior zippered pocket



### Basic 2 Burner Propane Stove

**Product Code #230004**

The Basic 2 Burner Propane Stove by Coleman is not only convenient, but reliable. Take it with you on your next camping, backpacking, or other outdoor cooking opportunity. The burners can adjust individually from simmer to full boil. The stove offers an aluminum-steel cook top, which is rust-resistant and easy to clean.



### Prudhoe Bay™ Chair

**Product Code #PBCH**

designed with a roomy 23" oversized seat and added .5" polyfill throughout. A major part of comfortable seating is the recline. We did our research and discovered that 60° is the optimal recline angle for comfort. This chair is equipped with the perfect 60° recline, convenient carry bag, and cupholder.



### Ultimate Camo Backpack

**Product Code #MCBPD-L-5**

Not only is this backpack great looking, but is full of premium features! It is built with our toughest rip-stop polyester accents, two huge storage compartments, a ton of pockets, extra padded shoulder straps, heavy duty pulls and zippers, and even a back accessed security organizer.



### Himalayan Outdoor Kit

**Product Code #9978**

- Made Of 500D PVC Tarpaulin And 900D Nylon
- PVC Lining With EPE Foam Insulation
- Double Zippered Main Compartment
- Large Front Pocket
- Detachable/Adjustable Padded Shoulder
- Strap And Web Carrying Handles
- Resistant To Water, Punctures, Mildew and



### Glory Auto Emergency Kit

**Product Code #GT5012**

Tire-shaped ABS case includes crimping tool, gloves, tire gauge, jumper cables, electrical tape, spinner handle, 9 piece 1/4" drive sockets, copper wire brush, 70 terminals, 8 fuses, 2-way screwdriver, 8 piece combo wrench, thickness gauge, siphon pump, water bag, electrical tester, work light, 2 stubby screwdrivers, 20 cable ties, 3 open end wrenches and a first aid kit.



### Cleveland 5 Piece Bamboo BBQ Set

**Product Code #GR2006**

5 piece BBQ set made of bamboo and stainless steel. It includes a serrated-edge spatula with bottle opener, BBQ fork, tongs, knife, and a basting brush.



### 12 Volt Dual Function Compressor/Inflator w/ 24 HR Roadside Assistance

**Product Code #204000**

- Dual function 150 PSI Compressor/Inflator includes 2 separate motors: low volume/high pressure for tires and high volume/low pressure for large inflatables
- Inflates a car tire in 6 minutes; Inflates a double air mattress in 2.5 minutes
- Analogue gauge with auto shut-off feature
- Built-in 3 LED work light with separate on/off



### Fit2Go Health Tracker

Product Code #3270

Monitors calories burned, activity duration, steps taken, distance walked and sleep quality. Set personal goals for steps taken and track your progress based on your percentage complete to goal. Bluetooth health tracker syncs and tracks your activity with an easy to use APP that is compatible with iOS and Android devices.



### Chill and Grill Outdoor Kit

Product Code #3816

- With a portable grill and large cooler compartment, you can bring the party along wherever you go
- Separate zippered compartments to store grill, tongs and food
- Kit includes: grill and tongs
- Top grab handles and non-removable shoulder strap



### Muskoka Fall™ Gift Set

Product Code #GFST05

- 18-8 Stainless Steel bottle with dual wall vacuum insulation is BPA-Free and made with FDA compliant materials
- Flip top lid with push button latch allows for easy one handed operation
- Wide mouth twist top spout for easy cleaning.
- Flashlight features three light modes, high, low and strobe mode.



### Locker Duffel Bag Black

Product Code #MRC1105

- 600D Polyester
- Large main compartment with two end zippered pockets and a zippered front pocket
- Two zippered side pockets
- Detachable/adjustable shoulder strap



### Marine Ultra Backpack

Product Code #60429

Leak resistant, easy to clean, antimicrobial liner. Padded shoulder straps for extra comfort. Corrosion-resistant hardware to survive marine conditions.



### RealTree Pack

Product Code #62022

18 Cans capacity. Licensed Realtree(R) AP HD(TM) Camouflage Pattern. Padded, Adjustable Backpack Straps for Hands Free Carrying. Large, Front Zippered Pocket. Side Mesh Pockets for Storing & Organizing Additional Items. Leak Proof, Heat Sealed Liner.



Available Colors



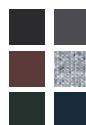
### Carhartt Force® Ridgfield Solid Long Sleeve Shirt

Product Code #102418

- 3-ounce 60% polyester/40% cotton sheeting to keep you cool
- FastDry® technology wicks away sweat for all-day comfort
- Life is a full-contact sport, and Stain Breaker® allows stains to wash out easily
- Protect your neck from the sun: double-layer collar stands up for extra protection



Available Colors



### Rain Defender® Paxton Heavyweight Hooded Sweatshirt

Product Code #100615

- 13-ounce, 75% cotton/25% polyester blend
- Attached jersey-lined three-piece hood with draw-cord closure
- Front hand-warmer pocket has a hidden security pocket inside
- Stretchable, spandex-reinforced rib-knit cuffs and waistband
- Rain Defender® durable water-repellent finish



Available Colors



### Force Extremes® Fishing Graphic Hooded Sweatshirt

Product Code #102873

- 6.25-ounce, 65% Poly, 35% Cocona® 37.5® Poly
- FastDry® with 37.5® Technology makes this our fastest-drying gear
- Odor Fighting
- Attached, contrasting jersey-lined three piece hood with drawcord closure
- Carhartt Fishing logo down left sleeve



### LED Lenser® P3

**Product Code #P3AFSP**

The P3 flashlight is small and lightweight, with a handy clip, and requires only one AAA battery for hours of light. In addition to these features the P3 has the Rapid Focus System™, allowing you to transition from a circular, spill-beam to a focused, long-distance beam quickly with just one-hand.



### Nite Ize Radiant 300 Rechargeable Lanterns

**Product Code #R300RL**

The Radiant 300 Lumen Rechargeable Lantern is unchallenged for its features, compact size, and unbeatable value. It is equipped with both white and red LED modes, a first-of-its-kind carabiner-style handle, and can be recharged or used to charge other small devices like cell phone and cameras. 300 lumens and weather and impact resistant.



### AA Camo Mini MagLite® with "Cougar" Pocket Knife

**Product Code #M2AC-7643**

MagLite is 5 3/4" long and in traditional leaf camo design. Knife has 4" long handle and 3" black stainless steel blade. Package includes 2 "AA" batteries and presentation box.



### RealTree Hard Top Gripper

**Product Code #62034**

22 Cans capacity. Ergonomic comfort grip rubberized handle. Front and back pockets. Extra long shoulder strap. Dual zipper entry. Protective molded tent-top compartment for separate dry storage.



### Contour 30 Workman

**Product Code #43295**

Contemporary Styling with Ergonomically Friendly Features. Non-slip, comfort grip swing up handle add comfort and improved grip in wet conditions. Molded Side Handles for Lifting In/Out of Vehicle. Slotted lid for Easy Stacking. Curved Back Hugs Comfortably to Your Body for Ultimate. Carrying Comfort. Holds up to 30 quarts.



Available Colors



### Clique Men's Tulsa

**Product Code #MQO00022**

95% polyester, 5% spandex, water-resistant, breathable, zip off adjustable hood, articulated elbows, reflective piping, reverse coil zippers, pieced front and back body, adjustable Velcro cuffs, front zippered pockets, interior pockets



Available Colors



### Columbia Men's Tamiami™ II Short-Sleeve Shirt

**Product Code #7266**

- 2.4 oz., 100% polyester ripstop fabric
- Omni-Wick™
- Quick-dry
- Omni-Shade™; UPF 40 sun protection
- Anti-microbial treatment protects this product from bacterial growth
- Button-down collar



Available Colors



### Columbia Men's Perfect Cast™ Polo

**Product Code #6016**

- 5.3 oz., 100% polyester
- Omni-Wick™
- Omni-Shade™; UPF 30 sun protection
- Vented
- Side vents



### Master 5 Pc BBQ Set

**Product Code #BBQ41**

- Crafted out of FDA Stainless Steel.
- Set comes complete with a spatula with serrated edge and integrated bottle opener in blade, large stainless steel BBQ fork
- Large stainless steel BBQ knife, a pair of stainless steel tongs, and a Silicone basting brush.
- Includes elastic/reinforced hook and loop closures to keep all the utensils in place.





Available Colors



### Original Chore Coat

Product Code #CH416

- Water repellent finish (duck only)
- Two chest pockets with hook/loop closures
- Triple-needle stitched main seams
- Heavy-duty brass zipper with a hook/loop storm flap
- Edge-stitched corduroy collar with snaps for optional hood
- Pleated bi-swing action back



Available Colors



### Port Authority® Active Hooded Soft Shell Jacket

Product Code #J719

- 100% polyester knit shell bonded to a water-resistant film insert and a 100% polyester mesh interior
- 1000MM fabric waterproof rating
- 1000G/M2 fabric breathability rating
- Three-panel hood with adjustable locking drawcord
- Reverse coil zipper



Available Colors



### Port Authority® Hooded Core Soft Shell Jacket

Product Code #J335

- 100% polyester woven shell bonded to a water-resistant film insert and a 100% polyester microfleece lining
- 1000MM fabric waterproof rating
- 1000G/M2 fabric breathability rating
- Adjustable hood with locking drawcord to customize fit
- Reverse coil zippers



Available Colors



### Port Authority® Core Colorblock Soft Shell Jacket

Product Code #J318

- 100% polyester woven shell bonded to a water-resistant film insert and a 100% polyester microfleece lining
- 1000MM fabric waterproof rating
- 1000G/M2 fabric breathability rating
- Zip-through cadet collar
- Reverse coil zippers
- Front zippered pockets



Available Colors



### OGIO® - Rage Duffel

Product Code #108089

- 420D dobby poly/600D poly
- Front zippered pocket
- Ventilated shoe compartment with grab handle
- Large main compartment with U-shaped opening
- Custom-molded, interlocking handle
- Side-zippered accessory pocket



Available Colors



### OGIO® - All Terrain Duffel

Product Code #711003

- 600D poly/420D dobby poly
- Large main compartment with U-shaped opening
- Ventilated shoe compartment
- Front storage pocket with mesh dividers
- Fleece-lined digital media/audio pocket with headphone exit port
- Custom-molded interlocking handle



### OGIO® - Rogue Pack

Product Code #411042

- 600D poly/420D dobby poly
- Top-entry padded laptop compartment
- Fleece-lined valuables pocket
- Deluxe organization panel
- Dual side beverage/accessory holsters
- Padded back panel
- Ergonomic adjustable shoulder straps with adjustable sternum strap



Available Colors



### Port Authority® Torrent Waterproof Jacket

Product Code #J333

- 100% polyester
- 100% polyester mesh-lined body and hood
- 5000MM fabric waterproof rating
- 1000G/M2 fabric breathability rating
- Zip-off hood
- Contrast waterproof zippers
- Adjustable self-fabric tab cuffs with hook and loop closures



### CornerStone® - ANSI 107 Class 3 Safety Windbreaker

Product Code #CSJ25

- ANSI/ISEA 107 Class 3 certified
- Water resistant 100% PU shell, 100% polyester backing
- 8000MM fabric waterproof rating
- Snap-off hood with drawcord and toggle for adjustability
- Two-way black Vislon zipper
- Internal storm flap



Available  
Colors



### Port Authority® Enhanced Visibility Challenger™ Jacket

Product Code #J754S

- Durable 100% polyester water resistant shell
- Poly-filled body with heavyweight fleece lining for extra warmth
- Nylon sleeve lining for easy on/off
- Rib knit cuffs and waistband
- Slash zippered pockets, interior zippered pocket
- Port Pockets™ for easy embroidery access



Available  
Colors



### Mesa Jacket

Product Code #2268

- Smooth-face fleece offers abrasion-resistant wind protection
- Brushed fleece interior for comfort
- Chest and two side zip pockets
- MP3 port in chest pocket
- Stretchy sleeve panels for easy don/doff
- High collar and oversized hoodie for extra coverage when needed



Available  
Colors



### Ravine Lightweight Jacket

Product Code #5100

- Water resistant, wind resistant light weight soft shell
- 4 way stretch fabric
- Chest and side zipper pockets
- Audio port in right chest pocket
- Elastic hem drawcords with inside locks



Available  
Colors



### LED 2-Cell "D" Mag-Lite

Product Code #2DLED

Designed for professional and consumer use, Maglite LED flashlights build on the experience in craftsmanship, engineering, and advanced technology evident in all Mag flashlights. Batteries not included. Features: full lifetime warranty; spare lamp inside tail cap; Balanced Optics combining a highly refined reflector with a quality LED, for a brilliant adjustable beam.



### Corbin Small Canvas Messenger Bag

Product Code #SC151B

Part of the Urban Edge line from Canyon Outback Leather, this messenger has great features such as a carrying handle and an adjustable shoulder strap that extends to 55". Top zipper closure with fold over flap that snaps closed. Two exterior cargo front pockets and two small interior pockets.



### TFX Men's Stainless Steel and Rose Gold Bracelet Watch

Product Code #38B101

The TFX Collection blends exceptional style with incredible value. TFX watches offer the quality and fashion that consumers expect from one of the world's most renowned timekeeping brands at prices that meet the requirements of any corporate program. In stainless steel with rose-gold, black sunray dial, mineral glass crystal, calendar, second hand, fold over closure.



### Streamlight Jr. Led

Product Code #SL-71500

Black, push button tailcap, water resistant. LED 85 lumens, 2 AA alkaline batteries included.



### ProPolymer 3C LED Flashlight

Product Code #SL-33302

StreamLight 3C LED ProPolymer black engineering grade polymer case with thermo-plastic grip without alkaline batteries. Includes 10 white LEDs. 85 LUMENS. Blister packaged. Intrinsically safe.



### Septor Flashlight

Product Code #SL-61052

Septor with alkaline batteries. Rubber and elastic straps - Yellow

\$40-50



### Fusion Rechargeable Triple Output CREE®

Product Code #FL107

High intensity rechargeable flashlight with three selectable light levels, strobe and SOS modes. Machined Aluminum body is ergonomically designed and has an ideal grip for all weather conditions. 1300 lumen light beam with a beam range of up to 200 m. Featuring a push/pull focusing action that provides an adjustable beam.



### 61 Pc Heavy Duty Tool Set

Product Code #TS39

Housed in a durable blow molded plastic case with handle. Includes 12 pc driver/socket set, 30 pc bit set, flipper ratchet handle, Philips screwdriver and flathead screwdriver, long nose pliers, adjustable plier, wire cutters, 9 pc Allen Key set, driver handle, universal joint adaptor, spark plug socket and an extension bar.



### 3 Day Stretch Backpack Black

Product Code #MRC9979

- 600 denier polyester construction with vinyl backing
- Large expandable main packing compartment
- Organizer pocket
- Side parachute clasps
- Easy – grip zipper pulls
- Back support belt with parachute clasps
- MOLLE Loops
- Silk Screen size: 4" embroidery size: 3.5"



### Realtree Camo Leather Shell Bag

Product Code #CM890

Safely transport ammunition on your next hunting trip with the Realtree camo shell bag. This camouflage bag will fit right in with the rest of your hunting gear. It features a heavy-duty belt that adjusts from 32" to 60" for an ideal fit, and it has two pockets with a protective polydrill lining for live and spent shells.



### Weber Smokey Joe Charcoal Grill

Product Code #10020

Perfect for a streamside fish fry or a tailgate party with your friends! This 14 .5 portable charcoal grill features porcelain-enameled bowl and lid, 1 glass-reinforced nylon handle, and triple nickel-plated cooking grate.



### LED Lenser

Product Code #TT

At 4.5" in length, the LED LENSER TT flashlight will bring light to new places. The Turning Focus System provides a customizable light picture, focusing on objects at a distance or seamlessly filling your peripheral. The TT comes with removable anti-roll protection, ensuring the light you need will always be within your reach. Includes lanyard and anti-roll.



### Prudhoe Bay Skipper

Product Code #PBTOT

The Prudhoe Bay Skipper is everything you could want in a premium tote. The Skipper, made with our toughest Tarpaulin fabric, is 100% waterproof with fully taped seams and zippers. It has a huge 17" x 19" x 7.5", double heat sealed PEVA no-leak liner, to make sure whatever your packing stays nice and cold.



### Brookstone® Andes Water Resistant Bluetooth® Speaker

Product Code #70259

- The added feature of a dimmable light allows you to use the speaker at night
- Silicone strap for easy portability
- Stream music or audio content from any tablet, smartphone, or other Bluetooth enabled device
- Bluetooth operating distance of up to 30 feet



### Get Fit Health Tracker

Product Code #70360

- Monitors calories burned, activity duration, steps taken, distance walked and sleep quality
- Set personal goals for steps taken and track your progress
- Bluetooth health tracker syncs and tracks your activity with an easy to use APP that is compatible with iOS and Android devices





### Brookstone® Xtreme Waterproof Bluetooth® & NFC Speaker

**Product Code #70224**

- Silicone strap for easy portability
- Stream music or audio content from any tablet, smartphone, or other Bluetooth or NFC-enabled device
- Bluetooth operating distance of up to 30 feet
- Speakerphone feature
- Play, pause, track and volume controls
- Built-in lithium battery recharges via included



Available Colors



### Columbia Men's Bahama™ II Long-Sleeve Shirt

**Product Code #7048**

- 3 oz., 100% Tactel®; nylon taffeta Back
- Country Cloth
- Quick-dry
- Omni-Shade™; UPF 30 sun protection
- Button-down collar
- Roll-up sleeves with tab holders



Available Colors



### Duck Vest / Arctic-Quilt Lined

**Product Code #V01**

- 12-ounce, heavyweight firm-hand, 100% ring-spun cotton duck. Water repellent and
- Wind resistant.
- Nylon lining quilted to arctic-weight-polyester insulation
- Brass center-front zipper with inside storm flap
- Inside pocket with hook-and-loop closure



Available Colors



### Columbia Men's Glennaker Lake™ Rain Jacket

**Product Code #2015**

- Shell: 1.9 oz., 100% nylon Hydroplus waterproof shell
- 100% polyester mesh lining
- Stow-away hood
- Adjustable cuffs
- Adjustable drawcord at bottom hem
- Zippered hand pockets



### Highway Deluxe Roadside Kit with Tools

**Product Code #3350-46**

This set consists of an adjustable wrench, long nose pliers, tape, brush, razor, tire gauge, screw driver handle with three adaptors, 19 bits in bits holder and adapter, 11 sockets, electrical tape, tire brush, jumper cables, and window breaker with seat belt cutter. Set comes in rubber soft touch EVA blow molded storage case.



### Arctic Zone® Titan Deep Freeze® Speaker Cooler

**Product Code #3860-57**

Made with Deep Freeze® high performance insulation, an integrated heat barrier and Cold Block™ base help keep still ice for 2 days! Main compartment hold up to 24 cans. Includes two mounted Bluetooth compatible speakers that work with any device with Bluetooth capability. Simply pair the speakers to your device and stream your favorite movie or music.



### Carhartt® Foundations 28" Packable Duffel w/ Pouch

**Product Code #1889-25**

Made of polyester with Rain Defender® durable water repellent material, this bag is made to last. This is a packable that doesn't sacrifice its ruggedness and durability for size. The large 28" duffel fits inside the 14" x 7.5" cinch top pouch which can also be used as a separate tool or accessory bag. The extra-large duffel is durable and spacious with padded removable shoulder strap and exterior slash pocket.



### High Sierra® Haywire 17" Computer Backpack

**Product Code #8051-74**

Features an expandable multi-compartment design to make sure you can bring everything with you, including up to a 17" computer in the dedicated Cushion Zone™ sleeve. Integrated Tech Spot™ sleeve fits most tablets, including iPad. Zippered side pocket, mesh beverage pocket.



### elleven™ TSA 17" Computer Attaché

**Product Code #0011-58**

Includes designated laptop-only section that unfolds to lay flat on the X-ray belt to increase your speed through security. Back zippered compartment holds up to 17" laptops and has separate zippered pocket. Main zippered compartment for file dividers and mesh pocket organization. Front zippered pocket holds the removable techtrap elastic organizer panel.



### Deep Water Marine Cooler Bag

Product Code #Deep Water Marine Cooler Bag

Incorporate all of the great design features found in our other cooler bags, plus corrosion resistant components and a premium reinforced tarpaulin exterior. The smooth, easy to clean exterior surface offers excellent water resistance and durability, ideal for marine environments.



### Under Armour Team Hustle Backpack

Product Code #1272782

- 600 Denier, 100% Polyester
- UA Storm® technology delivers an element-battling, highly water-resistant finish
- Tough, abrasion-resistant bottom panel
- Soft lined laptop sleeve—holds up to 15" laptop
- Water-repellent front valuables pocket to keep your stuff safe



Available Colors



### Under Armour Undeniable Large Duffel

Product Code #1263968

- 600 Denier, 100% Polyester
- UA Storm® technology delivers an element-battling, highly water-resistant finish
- Tough, abrasion-resistant bottom & side panels
- Large front zippered organization pocket
- Adjustable, padded, HeatGear® shoulder strap for total comfort



### Terra Rolling Duffel

Product Code #80330

- Spacious main compartment
- Hard side separate bottom compartment
- Adjustable buckle strap
- Detachable/adjustable padded shoulder strap
- Retractable locking pull handle
- In-line skate wheels
- Protective curb guards



Available Colors



### Under Armour Men's Qualifier 1/4 Zip

Product Code #1276312

- 100% Polyester
- Soft and durable circular knit construction with brushed interior for extra warmth
- Signature Moisture Transport System wicks sweat to keep you dry and light
- Reflective 1/4 zip for visibility during after-hours training
- Contrast fabric overlays on sleeves



### Archon Rechargeable Spotlight (CREE® XPG R4)

Product Code #FL125

- Ergonomic handle makes carrying the light effortless and easy
- Equipped with a powerful CREE XPG R4 bulb
- High, medium, low, strobe and S.O.S. modes
- Comes with two re-chargeable lithium batteries and a charger



Available Colors



### Under Armour Men's Storm Armour® Fleece Hoodie

Product Code #1259080

- 100% Polyester
- Storm Armour® Fleece keeps you warm and dry
- DWR finish to repel water without sacrificing breathability
- Brushed innerlayer and quick-drying, smooth outer layer
- Signature Moisture Transport System wicks sweat away from the body



Available Colors



### Under Armour Men's Performance Long Sleeve Polo

Product Code #1283708

- 95% polyester, 5% elastane
- Smooth, soft anti-pick, anti-pill fabric has a cleaner, snag-free finish
- Four-way stretch fabrication allows greater mobility in any direction
- Durable rib-knit collar
- Athletic loose fit



### Nike Golf Medium Duffel

Product Code #TG0241

- 150 x 300D polyester/1,680D ballistic nylon
- 150D polyester lining
- Contrast welded Swoosh design trademark
- Zippered main compartment
- Dual web handles with padded grip
- Adjustable, detachable, padded shoulder strap



Available Colors



### Port Authority® Textured Hooded Soft Shell Jacket

Product Code #J706

- 1000MM fabric waterproof rating
- 1000G/M2 fabric breathability rating
- Hood with locking drawcord for adjustability
- Storm flap with chin guard
- Ergonomic zipper pulls
- Zippered chest and sleeve pockets with contrast bar tack
- Front zippered pockets with contrast bar tack



Available Colors



### CornerStone® - Duck Cloth Work Jacket

Product Code #J763

- 12-ounce, 100% cotton duck cloth
- 6-ounce polyfill nylon lining for added warmth
- Corduroy collar
- Bi-swing back
- Zippered chest pocket
- Adjustable 2-snap sleeves
- Front slash pockets
- Adjustable button waist tabs



### OGIO® Camo Excelsior Pack

Product Code #411069C

- 600D printed poly; 600D shadow ripstop poly
- Large secondary compartment for belongings and essentials
- Main compartment with padded laptop and tablet/e-reader sleeves
- Easy-access front sleeve pocket
- Front zippered pocket with deluxe organization panel and key clip



Available Colors



### Port Authority® All-Season II Jacket

Product Code #J304

- 100% Taslan nylon shell
- 100% microfleece body lining
- 100% polyester sleeve lining for easy on/off
- 3000MM fabric waterproof rating
- Critically seam-sealed for added waterproof protection
- 3000G/M2 fabric breathability rating
- Zip-off hood with drawcord and toggles



Available Colors



### OGIO® - Metro Pack

Product Code #711105

- 420D dobby poly/600D poly
- Back panel side-entry padded laptop pocket
- Large center storage area
- Power cord and mouse storage
- Internal file sleeve
- Weatherproof fleece-lined digital media/audio pockets with headphone exit port
- Adjustable sternum strap



Available Colors



### Decorator Ice Chest

Product Code #48149

Igloo 52 quarts, 83 can decorator ice chest. Features Ultratherm (TM) insulation that keeps contents cold. Fish measuring ruler molded into lid. Reinforced swing up handles with tie down loop. Refrigerator quality liner for easy cleaning. Recessed drain plug makes emptying ice and cinch. Measures 25.4" l x 14.75" w x 14.4" h. Made in the USA.



### Coleman® 36-Hour 42 Can Marine Soft Cooler

Product Code #VCLM010

- Water-resistant material
- Antimicrobial heat sealed liner resists odor, mold, mildew & fungus from forming on the product
- Keeps the Ice!™ - 36 hour ice retention at temperatures up to 90 degree F
- Zippered main compartment with a top hatch for easy access
- Holds 42 cans



### Coleman® 60-Quart Wheeled Cooler

Product Code #AC6245

- High density foam insulation construction for maximum thermal retention
- ThermoZONE™ insulation does not contain CFCs, HFCs or HCFCs which deplete the ozone
- Hinged lid with 4 built-in beverage holders
- Retractable telescoping handle
- Rust-proof, leak-resistant drain



Available Colors



### Rockford Jacket

Product Code #100247

- 4.25-ounce 100% nylon oxford
- Polyester mesh lining in body, taffeta lining in sleeves
- Left chest pocket with media port to inner garment
- Snap-adjustable cuffs
- Draw-cord adjustable hem
- Rain Defender® durable water-repellent





**Pro-Basic Fleece Hooded Pullover - Thermal Lined**

**Product Code #GP300**

- 60% cotton/40% polyester fleece
- 5-oz. 60% cotton/40% polyester thermal lining
- Raglan sleeves
- Knit cuffs and waistband
- Double layered three-piece hood with drawstring
- Large front pocket



**Midweight Realtree Xtra® Camo Hooded Zip-Front Sweatshirt**

**Product Code #K289**

- 10.5-ounce, 50% cotton/50% polyester; Realtree Xtra® camouflage
- Attached three-piece jersey lined hood with draw-cord closure
- Full-length brass front zipper
- Two front handwarmer pockets
- Stretchable, spandex-reinforced rib-knit cuffs and waistband



**AudioStar™ A26 Bluetooth Stereo Speakers**

**Product Code #AIO-ASA26**

Rechargeable Lithium-ion battery extends Bluetooth play for hours. On-board play and volume control. Compact twin speakercones extend for Full Range Dynamic sound. Micro USB extends & connects Stereo speakers together. Cords auto-wind into case. Speakers magnetically lock into each other when not in use. Deluxe mesh carrying case and standard USB adapter included.



Available Colors



**DRI DUCK Men's Poly/Spandex Motion Full-Zip Softshell**

**Product Code #5350**

- 9.5 oz 90% polyester/10% spandex softshell with a soft interior
- 4-way stretch
- Wind and water-resistant
- Zip-closure chest and hand pockets
- Adjustable Velcro cuffs
- Media port
- Auto-lock zipper with easy grab puller



**Basecamp Sherpa Backpack**

**Product Code #BC6701**

1680D/pvc/ Polyester Construction With Heavy Duty Comfort-Grip Cable Handle; Sternum Strap; Organizer Pockets; Air-Channel Back; Water Resistant Pocket And Ergonomic Straps. Tech Friendly Features Include: Rfid Shielding Pocket That Defends Against Unauthorized Scanning; Tsa-Friendly Laptop Pocket; And Felt Lined Tech Pocket.



**Urban Peak® 25L Daypack**

**Product Code #BG265**

- Uses our Cool-Sweep system to enhance ventilation.
- Constructed out of heavy duty 600D Polyester and 420D Ripstop with a water resistant PU coating.
- Features main compartment with zippered opening with zippered separator to create a secondary compartment.



**Brookstone® Andes Water Resistant Bluetooth® Speaker**

**Product Code #70259**

- Enjoy your favorite music anywhere with a speaker that is water resistant (IPX4 Rated) making it perfect for hiking, camping, or outdoor activities
- The added feature of a dimmable light allows you to use the speaker at night
- Silicone strap for easy portability
- Stream music or audio content





### Deep Water Marine Cooler Bag

#### Product Code #2004DPW

Includes a 32-Quart, high capacity liner that easily fits 48 pre-chilled canned beverages, or 36 cans, plus two 10 lb. bags of ice. A rugged shoulder strap, with quick-release clips is also included. A high-capacity front pocket provides ample storage for gear, while our premium high-density foam provides ice retention.



### GameGuard Duffle Bag

#### Product Code #2003GGC

Features a lined interior, greatly improved exterior pocket access and a large lined compartment for boots or dirty clothes. Measuring 24" wide, 12" deep and 14" tall, our Duffle Bag is filled with pockets and storage, keeping all of your gear organized and easily accessible.



### 13 Qt. Small Engel® Cooler

#### Product Code #3455

- Made Of Quality Injection Molded (PP Copolymer)
- High-Grade Molded Polystyrene Foam Insulation
- Airtight EVA Gasket Seal
- Integrated Shoulder Strap And Ergonomic
- Recessed Handles
- Stainless Steel Latches And Self-Stopping Hinge



### Solo Solo® Velocity Backpack Duffel

#### Product Code #KL5007

The two-tone black and navy Solo Velocity backpack duffel is constructed from top-shelf materials. It gives you the benefits of both a duffel bag and a backpack. Features include a padded compartment that will hold a 17.3" laptop, tablet pocket, separate shoe compartment, two quick access zippered pockets at the top and side zippered pockets.



### Arctic Zone® Titan Deep Freeze® Rolling Cooler

#### Product Code #3860-58

Made with Deep Freeze® high performance insulation, an integrated heat barrier and Cold Block™ base help keep still ice for 3 days! Main compartment plus front pocket hold up to 58 cans. Easy access lid, beverage station and all terrain cart with retracted, telescopic handles make this the ultimate cooler for any event.



### Urban Peak® Gift Set

#### Product Code #UPK01

- Includes the 12 oz 3-in-1 Insulator, 20 oz Vacuum Tumbler, 30 oz Vacuum Tumbler and the Cube 24 Can Cooler Bag
- Tumblers include a clear screw-on lid
- Made with FDA compliant 18-8 Stainless Steel
- The copper lined, vacuum insulated deep draw liner will maintain optimal drinking temperature's and features a sweat-free



Available Colors



### CornerStone® Washed Duck Cloth Flannel-Lined Work Jacket

#### Product Code #CSJ40

- 12-ounce, 100% cotton enzyme washed duck cloth
- 100% acrylic flannel body lining
- 3-ounce polyfill quilted polyester sleeve lining
- Adjustable snap cuffs
- Front slash pockets with hidden snap closures
- Interior pockets with snap closures
- Adjustable button waist tabs



### CornerStone® Washed Duck Cloth Insulated Hooded Work Jacket

#### Product Code #CSJ41

- 12-ounce, 100% cotton enzyme washed duck cloth
- 100% polyester tricot body and hood lining with 8-ounce polyfill
- 100% quilted polyester sleeve lining with 6-ounce polyfill
- Hood with antique brass eyelets and dyed-to-match drawcord



Available Colors



### Original Washed Chore Coat

#### Product Code #CH377

- 12-oz. 100% cotton sanded duck
- Arctic-weight insulation quilted to 100% polyester taffeta
- Two chest pockets with hook/loop closures
- Triple-needle stitched main seams
- Brass zipper with a hook/loop storm flap
- Edge-stitched collar with snaps for optional hood
- Pleated bi-swing action back



### 24 Pc. Deluxe BBQ Set

Product Code #BBQ4

*Includes spatula with built in serrated blade and bottle opener, fork, sauce brush, tongs, cutting knife, grill cleaner, 6 steak knives, 6 forks, 4 BBQ skewers and seasoning shakers. Implements made with FDA compliant Stainless*



### Foldable Chair w/Foot Rest

Product Code #GCH05

- Made out of 600D Polyester and strong Steel piping.
- Includes zippered pocket on the back of the high back to hold accessories.
- Cup holder, covered pocket that can hold snacks, a breathable Air Mesh back to keep you cool and adjustable arm and foot rest to give you superior comfort.



### Urban Peak® Gift Set

Product Code #UPK01 Camo

- Includes the 12 oz 3-in-1 Insulator, 20 oz Vacuum Tumbler, 30 oz Vacuum Tumbler and the Cube 24 Can Cooler Bag
- Tumblers include a clear screw-on lid
- Made with FDA compliant 18-8 Stainless Steel
- The copper lined, vacuum insulated deep draw liner will maintain optimal drinking temperature's and features a sweat-free



### Cambria BBQ Grill

Product Code #GR2400

*Stainless steel portable BBQ grill with two 13 1/4" x 8" grilling surfaces, two chrome plated briquette grills, wood carry handle, hinged lid, vent holes and steel legs with protective end caps.*



### Samsonite Andante 28" Drop Bottom Wheeled Duffel

Product Code #95020

- Durable casual duffel for easy travel
- The large U-shaped opening makes for easy access to packed travel essentials
- Split bottom compartment for added packing convenience
- Lightweight design and smooth rolling wheels for effortless mobility



### Hudson Realtree Xtra Canvas Duffel

Product Code #CX302D

*Travel with one of the most high-quality bags on the market with the Hudson Realtree Xtra canvas duffel. Measuring 9" x 20" x 15" (the legal carry-on size), this handy item features a top zipper closure, a zippered interior pocket, two small interior pockets without zippers and carrying handles. The shoulder strap, which is removable and adjustable, extends up to 56"*



### Carhartt® Signature 20" Work Duffel Bag

Product Code #1889-20

*Finally, a bag that works as hard as you do. Made of 1200d polyester with Rain Defender® durable water repellant material, this bag is made to last. Large main compartment to carry tools, cords, equipment and more. Rugged top and side handles as well as a removable adjustable shoulder strap with pad.*



### Hamilton Beach 7Qt. Slow Cooker

Product Code #33172

- Mess-free lid rest holds lid up securely
- Lid directs drips back into the dish
- Rubberized lid and Lid Latch strap seal lid onto base
- 7 qt. oval stoneware
- Dishwasher safe stoneware & glass lid
- Full-grip handles
- Recipe name holder



### 3 Day Stretch Backpack Ultralite Coyote

Product Code #MRC9979CY

- 600 denier polyester construction with vinyl backing
- Large expandable main packing compartment
- Organizer pocket
- Side parachute clasps
- Easy – grip zipper pulls
- Back support belt with parachute clasps
- MOLLE Loops





### Case Cooler

**Product Code #12030**

Our new Backpack, case cooler fits an entire case of your favorite beverage with box and all. Designed with padded shoulder straps allowing you to comfortably carry the cooler as a back pack. Heat sealed so it will not leak. Comfortable and stylish. Black only.



Available  
Colors



### Arctic Zone® Titan Deep Freeze® Rolling Cooler

**Product Code #800-00**

Folding camp chair with retractable cup holder and removable insulated cooler with 9-can capacity. Includes carrying bag. Made of steel and polyester. Weight capacity - 400 lbs



### Hybrid 30 Can Leakproof 24 Hour Cooler On Wheels

**Product Code #8036-BLK**

One of a kind Semi Rigid Hybrid Cooler with removable wheeled cart that combines the best quantities of a hard sided cooler with that of a collapsible cooler. Designed and manufactured to exceptionally high standards with high density EPE foam insulation. Field tested to retain ice for over 24 hours (packed with 30 cans and ice in a 2:1 ice/cans ratio).



### B.B.Q-Stainless Steel Master Grill Tools

**Product Code #SBL**

20pc Stainless Steel BBQ set is sure to fire up any party. Featuring brushed stainless steel tools securely housed in an aluminum carrying case, this impressive set includes everything needed for a stylish barbecue. A very sleek and sophisticated gift!



### Lithium-Ion PowerStation

**Product Code #JSL-0561XP**

A compact, lightweight and POWERFUL power source for everyday use to charge most smartphones, USB and 12-volt devices, and for emergency use to boost a dead vehicle battery or during power failures or other situations where there are no conventional power sources



### AA Mini Mag-Lite® LED& Leatherman® Rev

**Product Code #2AALED-LM50**

Super powerful 6 1/2" LED Mini MagLite in your choice of color. Full size Leatherman tool is 4" long when closed. Package includes 2 "AA" batteries and gift box. Your choice of Mag-Lite® color. Made and/or assembled in USA.



### Leatherman® Skeetool Green

**Product Code #832199**

4" Closed. An amazing lightweight multi-tool that is half tool/ half knife. Features include needlenose and regular pliers, wire cutters, hard-wire cutters, 420HC stainless steel blade, universal bit driver with bit storage in handle, carabiner/ bottle opener and a removable pocket clip. Boxed. Engraving on main blade only.



### Leatherman® Rebar

**Product Code #LM41**

4" closed. The new Rebar has pliers that have been optimized for strength and feature replaceable wire/hard-wire cutters. The Rebar is sure to be an instant hit on job sites, and home-projects the world over. Additional features include needlenose and regular pliers, electrical crimper, 420HC knife and 420HC serrated knife, file, saw, 3 different types of screwdrivers and much more.



Available  
Colors



### Port Authority® Vertical Soft Shell Jacket

**Product Code #J319**

- 100% polyester knit shell bonded to a water-resistant laminated film insert and a 100% polyester fleece lining
- 1000MM fabric waterproof rating
- 1000G/M2 fabric breathability rating
- Contrast reverse coil zippers
- Full-length interior storm flap
- Zippered chest pocket



Available Colors



### Eddie Bauer® Weather-Resist Soft Shell Jacket

Product Code #EB538

10,000MM fabric water protection rating, 10,000G/M2 fabric breathability rating, interior storm flap, chin guard, reverse coil locking zippers, binding at cuffs, open hem with locking drawcord. Zippered chest pocket, reflective Eddie Bauer logo on left sleeve. Made of 100% polyester knit shell with a durable water-repellent (DWR) coating.



Available Colors



### Eddie Bauer® - Soft Shell Jacket

Product Code #EB530

This weather-stopping, three-layer soft shell boasts very good water protection and breathability performance due to its 3K/3K fabric. 3000MM fabric water protection rating, 3000G/M2 fabric breathability rating, component loops at back neck and cuffs for securing to other jackets, reverse coil zippered chest pocket, front zippered pockets.



### Nike Golf Large Duffel

Product Code #TG0240

- 150 x 300D polyester/1,680D ballistic nylon
- 150D polyester lining
- Contrast welded Swoosh design trademark
- Zippered main compartment
- Dual web handles with padded grip
- Adjustable, detachable, padded shoulder strap



### Samsonite Tectonic™2 Medium Computer Backpack

Product Code #95002

- Brushed tricot-lined padded drop-in laptop compartment will accommodate most 15.6" laptops
- SmartSleeve™ slides over upright handles for easy mobility
- Brushed tricot sunglass pocket
- Two quick access storage pockets
- Contoured dual density shoulder straps



### Samsonite Xenon™ 2 Travel Bag

Product Code #95038

- Side, top and rear zippered pockets
- Side zippered pocket with collapsible shoe tunnel
- Zippered U-shaped opening provides easy access to the main compartment
- Front zippered compartment with multi-function organizer and neoprene tablet pocket (fits up to a 10" tablet)



### Solar Cooler

Product Code #P7328

This ingenious bag combines high-tech solar charging system with a cooler for spending a day outdoors. Simply plug your original USB charging cable into the USB port provided on the bag and place the cooler in direct sunlight to begin charging! It can directly charge to your device, or store the charge in your power bank by connecting it.



### First Alert AM/FM Weather Band Radio with Weather Alert

Product Code #SFA1160

Receives 24 Hour Instant Weather, Marine Forecast. Weather Alert Indicator. AM/FM Frequency Synthesized Digital Tuner. 3 Ultra Bright LED Flashlight. Clock. USB Port for Charging your Smartphone. Headphone Jack. Built In Speaker. Power: Dynamo, Solar, USB Charging, AAA Batteries not included.



Available Colors



### Tahoe Long Sleeve Jacket

Product Code #869

8 oz. 100% cotton denim stonewashed long sleeve shirt jacket lined with 8.1oz. medium-weight Anti-Pilling PANDA FLEECE. Two chest pockets with buttoned flaps. 2-button cuff and yoke back.



### 24" Cooker Package with 10 quart Aluminum Fry Pan and Basket

Product Code #1224

Camping and tailgating has never been easier! This compact King Kooker® 24" bolt together portable propane outdoor cooker package is great for all outdoor excursions. The cooker has a recessed top ring and large bottom ring for extra safety and stability, and a high pressure 54,000 BTU cast burner.



### **Twin Task C4 LED, UV LED**

**Product Code #SL-51045**

*Twin-Task 3C LED - C4 LED(3,730 candela) 185 Lumens - Runs 27 hours and 3 ultra-bright white UV LED (30 MW) Runs 81hours. 6 white UV LED(44 MW) Runs 63 hours.*

### **Marine Ultra 48 DuoDeco**

**Product Code #DUODECO48**

*Ultratherm insulated cooler body and lid. UV inhibitors guard against sun damage. Marine-grade extended life hinges. Vinyl coated stainless steel lid strap. Reinforced non-slip, comfort grip swing up handles with tie-down feature. Stain- and odor-resistant liner.*



### **Port Authority® Colorblock 3-in-1 Jacket**

**Product Code #J321**

*With a quilted zip-in liner jacket, our water-resistant Colorblock 3-in-1 Jacket quickly adapts to the elements in the mountains or around the neighborhood. Simply zip the shell jacket and liner jacket together for maximum protection or wear either piece alone as conditions dictate.*



### **OGIO® - Mastermind Pack**

**Product Code #108091**

*A versatile backpack with a huge center compartment and plenty of well-placed pockets keeps active executives or students ready for anything.*



### **Port Authority® Cascade Waterproof Jacket**

**Product Code #J322**

*For those days when the rain just won't stop. Our Cascade Waterproof Jacket is fully seam-sealed with waterproof zippers. This parka-length essential has modern good looks thanks to its trend-right colors, contrast zippers and colorblocking.*



### **Port Authority® Merge 3-in-1 Jacket**

**Product Code #J338**

*With clean, simple styling, this water-resistant 3-in-1 merges good looks and customizable weather protection. The colorblock shell and full microfleece inner jacket can be layered together or worn separately letting you fully adapt to the elements.*



### **Cool Fusion MaxCold 36 Can Roller**

**Product Code #58991**

*Igloo Maxcold Cool Fusion 36 Can Roller. 28.5 Quarts 36 Cans capacity. Locking telescoping handle and . Locking telescoping handle and wheels. Extra wide wheel base and rubberized soft-ride sport wheels. Multiple storage pockets in a variety of sizes for optimum organization. Cool Riser Technology(TM) for improved cooling performance. 16.25" L x 14" W x 18" H.*



### **196 Piece Deluxe Tool Set**

**Product Code #TS12**

*Blow Molded Case with Upgraded Rubber Grip Handles. Includes Needlenose/Slip Joint Pliers, Utility Knife, Adjustable Wrench, Phillips/Flathead Screwdrivers, Magnetic Bit Drive and 40 Piece Bit Set, 6 Piece Wrench Set, 9 Piece Allen Wrench Set, 20 Piece Ratchet Set, Fibreglass Handle Claw Hammer*

**\$60-70**

**\$70-80**





### 36 Can Roller Cooler w/Storage

Product Code #CB99

Made of 600D, EPE sponge insulation with a heat sealed liner and a hard no-leak removable plastic liner. Features an upper cinchpak for dry storage, front zippered pocket, expandable mid-section for added cold storage, shock cords. Inline skate wheels with molded protective feet and a telescopic pull handle for easy transport



### 70 Quart (100 Can) Xtreme® 5 Marine Cooler

Product Code #31845

Keep your food and drinks cold for an extended time on the water, and make the fun last longer, when you bring a Coleman® 70 Quart Xtreme® 5 Marine Cooler. Xtreme® technology uses an insulated lid and extra insulation in the walls to keep your items cold for up to 5 days. Large enough to hold 100 cans, you'll have plenty of space for refreshments for you and your fishing buddies.



### Eddie Bauer® Rugged Ripstop Soft Shell Jacket

Product Code #EB534

A rugged soft shell for hitting the trails or the town. A tough, textured ripstop shell and a warm plush sherpa fleece lining make this versatile jacket outdoorsy, yet technical. Performs with very good 3000MM fabric water protection and 3000G/M2 fabric breathability ratings. Reverse coil zippers, front zippered pockets, welded zippered left sleeve pocket, open cuffs.



### Emergency PowerStation

Product Code #50-155

Heavy-duty, large capacity battery is a fully portable power source, perfect for cars, trucks, boats, RV's, tractors, power failures or situations where emergency power is necessary • Built-in, professional strength 6-gauge booster cables with reverse polarity protection • 2.4 USB port for charging USB devices



### PowerStation w/ Air Compressor

Product Code #29-159

12 lb. lightweight portable power source with large capacity battery • Built-in 10-gauge booster cables with reverse polarity alarm that ensures correct hook-up • Powerful 260 PSI compressor for inflating any size tire, with built-in pressure gauge and 3 adapters for inflating everything from tires to pool rafts to sports balls



### Big Sky Leather Tool Bag

Product Code #CL606

The bag has two 13" carrying handles or a shoulder strap that adjusts from 36" to 54" for the perfect carrying length. The bag has numerous inside and outside pockets for tools and a large main compartment. It features antique brass hardware and zippers.



### Weber Go-Anywhere Charcoal

Product Code #121020

This portable charcoal grill features a space-saving compact design and provides 160 square inch cooking area. Constructed with porcelain-enameled bowl and lid, glass-reinforced nylon handle, and includes a triple nickel-plated cooking grate.



### 20" Outdoor Cooker Package with Aluminum Fry Pan

Product Code #22PKPT

Heavy Duty 20" Portable Propane Outdoor Cooker, 54,000 BTU Cast Burner, Recessed Top Ring and Large Bottom Ring for Extra Safety and Stability, Flame Protective Windguard, Aluminum Fry Pan and Basket, Listed LP Hose and Regulator with Type 1 Connection, Instruction/Recipe Booklet. CSA Design Certified Unit.



### Portable LCD Projector

Product Code #7140-81

The portable projector small enough to fit in your hand is packed with a 50-Lumen bulb. Go big with our pocket-sized HD projector. This portable projector connects to multiple devices for a "big screen" view of just about anything. Compatible with a USB flash drive, SD Card, or an HDMI connection. Its capable of projecting Photos, Videos, or work documents.



### Carhartt® Signature 20" Work Duffel Bag

Product Code #1889-20

Finally, a bag that works as hard as you do. Made of 1200d polyester with Rain Defender® durable water repellant material, this bag is made to last. Large main compartment to carry tools, cords, equipment and more. Rugged top and side handles as well as a removable adjustable shoulder strap with pad.



### Carhartt® Signature 17" Computer Briefcase

Product Code #1889-61

Room for all your gear, and then some. Whether its files, a laptop, or tools for the job this brief can handle all your needs with Rain Defender® durable water repellant material to 1200D polyester durable base. Large zippered dome shape main compartment holds your 17" computer and includes padded pocket for your iPad or tablet.



### High Sierra® 26" Wheeled Duffel Bag

Product Code #8050-40

Large main compartment with U-shaped zippered opening. Zippered front accessory pocket. Two top-loading end compartments. Inline skate wheels with corner protectors. Extendable, locking telescoping handle.



### Leatherman® Juice S2

Product Code #831928

3 1/4" closed. Stainless Steel body with anodized aluminum handles. Features include needlenose and regular pliers, wire cutters, 4 screwdrivers, scissors, 420 HC clip point knife and bottle/ can opener. Available in "Flame" Orange and "Storm" Gray. Boxed.



### AA Mini Mag-Lite® LED & Leatherman® Rev

Product Code #2AALED-LM50

Super powerful 6 1/2" LED Mini MagLite in your choice of color. Full size Leatherman tool is 4" long when closed. Package includes 2 "AA" batteries and gift box. Your choice of Mag-Lite® color. Made and/or assembled in USA.



### Leatherman® Skeletool

Product Code #LM30

4" Closed. An amazing lightweight multi-tool that is half tool/ half knife. Features include needlenose and regular pliers, wire cutters, hard-wire cutters, 420HC stainless steel blade, universal bit driver with bit storage in handle, carabiner/ bottle opener and a removable pocket clip. Comes with nylon sheath. Boxed. Engraving on main blade only.



### Marmot Men's PreCip® Jacket

Product Code #41200

- 100% nylon ripstop
- PreCip® Dry Touch technology
- Angel-Wing Movement™ allows for full range of motion
- 100% seam taped
- full visibility roll-up hood with integral collar
- DriClime® lined chin guard; elastic drawcord hem



### Marmot Men's Reactor Jacket

Product Code #98140

- 100% polyester microfleece
- Polartec® Classic 100 Micro
- flat lock construction
- wind flap behind front zipper with chin guard
- bonded zippered sleeve pocket
- zippered handwarmer pockets
- elastic drawcord hem



### Columbia Men's Watertight™ II Jacket

Product Code #2433

- 12.5 oz. 100% nylon Omni-Tech™ water proof and breathable shell
- 100% polyester mesh lining
- Fully seam-sealed
- Adjustable storm hood
- Adjustable drawcord at bottom hem
- Zippered hand pockets
- Packs into pocket



Available Colors



### Canyon Jacket

Product Code #4900

This hip-length jacket is designed for added warmth and comfort with a heavyweight 12 oz. cotton canvas shell, 6 oz. Polyfill® quilted lining in body, 4 oz. Polyfill® quilted lining in sleeves. Storm placket covers front metal zipper. Chest pockets have Velcro flap closures. Hidden knit cuffs and inside adjustable waist drawstring for a better fit.



### Eagle Creek Cargo Hauler Duffel

Product Code #EC7706

Ultra-Light, Durable, And Water Repellent Bi-Tech Armor Lite™ Fabric Duffel Bag. Only Weighs 1Lb 8Oz When Empty! U-Shaped Lid For Easy Access To Main Compartment; Six Lash Points For Attaching To A Roof Rack; And Easy Conversion Between Backpack And Duffel Bag. Just Pack It Into Its Front-End Zippered Compartment For Compact Storage.



### Dependable - 8000mAh Car Jump Starter

Product Code #EPB-80D5

- Input: 15V 1A via 3.5mm plug
- Output: USB 1 = 5V 2.4A / USB 2 = 5V 1.5A
- 8000mAh UL certified Lithium Polymer battery ensures 1000 charging cycles and power for up to 20 jump starts on one charge
- 4 LED lights indicate battery status

Includes a 20 inch Micro to regular USB cable, AC wall charger and 12V adapter



### Goal Zero® Torch 250 Light

Product Code #GZ-250

- Get the most reliable emergency LED light for any situation with the Torch 250 Flashlight.
- Built-in USB charging cable, solar panel and hand crank for bright light anywhere.
- Red light for emergencies, and USB port to charge your phone.



### 19 Qt. Medium Engel® Cooler

Product Code #3456

- Made Of Quality Injection Molded (PP Copolymer)
- High-Grade Molded Polystyrene Foam Insulation
- Airtight EVA Gasket Seal
- Integrated Shoulder Strap And Ergonomic Recessed Handles
- Stainless Steel Latches And Self-Stopping Hinge
- All Fittings Secured With Stainless Steel Screws



### Hi-Visibility Waterproof Jacket

Product Code #HVJ203

- ANSI/ISEA 107-2010 Class 3 Certified
- 2" reflective tape
- Nylon front zipper
- Left front chest pocket with hook/loop closure
- Hidden zipper pocket under storm flap
- Front pockets with hook/loop closure under flap and side entry



### Table Top Propane Grill

Product Code #220930

The Table Top Propane Grill is exactly what you need on your next outdoor adventure. It's family sized and cooks approximately 8 burgers at a time. The Perfectflow™ Propane Pressure Control System provides consistent output and performance to ensure the highest quality of cooking.



### Active Health Tracker with Heart Rate Monitor

Product Code #70370

- Monitors calories burned, activity duration, steps taken, distance walked, sleep quality and heart rate
- Measures heart rate while exercising or at rest
- Set personal goals for steps taken and track your progress



### 16" Bolt Together Outdoor Cooker with Low Profile Stainless Pan

Product Code #1645

16" Bolt Together Outdoor Cooker, Save Oil with the Low Profile 7 Qt. Stainless Steel Fry Pan and Basket, Deep Fry Thermometer, Listed LP Hose and Regulator with Type 1 Connection, Instruction/Recipe Booklet. CSA Design Certified.





### DRI DUCK - Horizon Two-Tone Boulder Cloth™ Canvas Jacket

**Product Code #5089**

- 12.0 oz., 100% cotton quarry-washed Boulder Cloth™ canvas
- Nylon quilted lining with contrast stitching 3 oz. of polyfill insulation
- Zip-through funnel collar
- Drop tail with canvas facing to secure the lining
- Insulated front pouch pockets



### DRI DUCK - Endeavor Canyon Cloth™ Canvas Jacket with Sherpa Lining

**Product Code #5037**

- 10.0 oz., 100% cotton Canyon Cloth™ canvas
- 12.0 oz., Sherpa lining
- Chest patch pocket with snap closure
- Insulated hand pockets
- Triple-needle stitching
- Heavy-duty metal zipper with easy grab puller



### Shoreline Vapor Jacket

**Product Code #101570**

- Lightweight, yet durable 100% nylon shell
- Storm Defender® waterproof breathable membrane keeps water out and lets body heat escape
- Fully taped waterproof seams throughout to ensure you stay dry
- Attached, adjustable hood to keep you protected



### Crowley Jacket

**Product Code #102199**

- 13.9-ounce, 90% nylon/10% spandex/100% polyester backing with Rain Defender® durable water-repellent
- Built to move with Rugged Flex® technology
- Tames the wind with Wind Fighter™ technology
- Beard owners rejoice! Center-front zipper with chin protector



### 55 Quart (85 Can) Rugged All Terrain Wheeled Cooler

**Product Code #34144**

Blaze a trail to anywhere and take along some cold food and drinks with a Coleman 55 Quart Rugged 55 A/T Wheeled Cooler. This all terrain cooler can go as far off the beaten path as you can with its telescoping handle and 8-inch oversized, off-road wheels that give you 75 percent more ground clearance than a Coleman cooler with 6-inch wheels.



### Lumina Jump Starter/Power Bank

**Product Code #EL126**

- 10,000 mAh Grade A battery
- Can boost car, motorcycle or recreational vehicle engines
- Featuring two USB ports that can be used simultaneously
- Can be switch between two 1A (low) and 2A (high)



### Premium 8 Piece Knife Block

**Product Code #KS03**

- Includes paring blade, filet blade, bread blade, carving blade, chopping blade, blade sharpener and meat shears
- Triple riveted Manchurian Ash handles and coordinating wooden block
- Stainless Steel knives
- Includes diamond finish butcher steel



### High Definition Action Camera

**Product Code #7140-60**

The HD Wifi action camera comes equipped with a 1080p HD lense and a 2" LCD screen to capture the special moment. The action camera is capable of taking both pictures & video with crystal clear resolution. The wifi capabilities allow you to take your photography to a new level. Simply download the suggested App to control the camera from your mobile device.



### Carhartt® Signature Deluxe 17" Computer Backpack

**Product Code #1889-41**

Finally, a bag that works as hard as you do. Made of 1200d polyester with Rain Defender® durable water repellant material, this bag is made to last. Large main compartment to store books, files and most 17" computers in the padded laptop compartment. Dedicated pocket for your iPad/tablet. Dedicated front zippered compartment to store tools opens wide for easy access.

\$80-90



### Hunt Day Pack

Product Code #305602

- Quiet poly blend fabric
- Rain Defender® durable water repellent technology to keep your things dry
- Dimensions: 15 x 21 x 9
- 2 large main compartments
- Stow away weapon carry for bow, rifle, or shotgun



### Legacy 16" Tool Bag with Molded Base

Product Code #1014718

- 1200D poly with Rain Defender® durable water repellent
- Custom 1.5" molded load-bearing base with boot tread
- 12 exterior pockets
- 16 interior pockets
- Webbing loops
- 16" x 10" x 10.5"

\$90-100



### GameGuard Canvas Jacket

Product Code #4000GGC

Combining an incredibly comfortable fleece lining with a rugged 100% cotton canvas exterior, our GameGuard Canvas Jacket is ready for the thickest underbrush or toughest duties around the ranch. Featuring timeless styling, an upright collar to block the wind and generous pockets providing excellent utility.



Available Colors



### Port Authority® Ranger 3-in-1 Jacket

Product Code #J310

This jacket offers three great layers for one great price. The plush microfleece jacket is perfect on cool days; the critically seam-sealed, waterproof shell on rainy days; or combine the two for more protection.



### Port Authority® Vortex Waterproof 3-in-1 Jacket

Product Code #J332

Packed with weather-fighting features, the Vortex Waterproof 3-in-1 provides a completely versatile outerwear system in one jacket. The fully seam-sealed waterproof shell and the warm polyfilled inner jacket can be worn separately or combined for optimal warmth and protection.



### Citizen Men's Silver-Tone Bracelet Watch

Product Code #BK383051A

Citizen Men's Quartz Stainless Steel Bracelet with White Dial. Day/Date feature and 50M Water Resistant, 37MM



### Weber Go-Anywhere Gas Grill

Product Code #1141001

Enjoy the convenience of a Weber Gas Go-Anywhere grill while on the go. This gas grill with black porcelain enameled finish and three glass-reinforced nylon handles has legs that fold up to lock the lid in place for carrying and uses disposable LP cylinder (not included). Cooking area is 160 square inches.



### Jensen Portable Bluetooth Speaker with Charging for Smartphones

Product Code #JBD400

Supports GAVDP1.0, AEDP1.0, AVDTPV1.0, ACRCP V1.0. Auxiliary input jack. LCD clock display. FM Stereo Receiver with PLL Digital Tuning. 1 Amp USB connector, charging your Smartphone or iPod/iPhone. Preset EQ. Blue ambient lighting. Digital volume control. Folding stand & carrying handle. Telescopic antenna.



### JBL Flip 4 Waterproof Bluetooth® Speaker

Product Code #JBL-Flip4

JBL Flip 4 is the next generation in the award-winning Flip series; it is a portable Bluetooth speaker that delivers surprisingly powerful stereo sound. Sporting durable, waterproof fabric materials that are available in 6 vibrant colors, Flip 4 is the all purpose, all weather companion that takes the party everywhere.

\$90-100



### Hamilton Beach The Scoop 2-Way Brewing Coffeemaker

**Product Code #49980Z**

2 ways to brew - single cup or full pot. 12 cup glass carafe. Use your favorite ground coffee. Regular or bold brew strength. Automatic pause & serve. One cup single serve. Also uses Senseo coffee pods. Brews up to 14 ounces in travel mug (not included). Programmable timer with automatic shutoff. Unique scoop filter measures and filters coffee.



### EVERLAST Activity Tracker/Sleep & Heart Rate Monitor

**Product Code #PS9521**

Track your daily fitness progress with this wearable activity tracker from EVERLAST. Features: One Touch Display, Step, Calories burned, Distance, Activity time and daily goal %, Sleep Monitor, and ECG & Heart-rate Measurement. Rechargeable battery, Time/Date display, Activity alarm and Clock alarm. Wireless connectivity to free tracker app.



### Large White Dial Bracelet

**Product Code #01.0441.120**

- Swiss-made
- Stainless steel case
- Sapphire coated mineral crystal
- Date window
- Luminous hands, numerals & markers
- Water resistant to 100 meters (330 feet)
- 3 year limited warranty
- 20mm Lug Width



### Pulsar Men's Watch with Blue Dial

**Product Code #PS9521**

Pulsar Business. This contemporary men's Pulsar watch is designed with a bold blue dial and stainless steel case and bracelet. The date calendar is located by the 6 o'clock marker. 50 meters water resistant.

**\$90-100**



### iCOOL™ Extreme High Performance Cooler Bag

**Product Code #GR4803**

The iCOOL Extreme high performance cooler bag is constructed from welded heavy duty 500D PVC tarpaulin on the exterior, includes 1/2" foam insulation and holds over 20 liters or 24 12 oz. cans in the leak proof welded thermoplastic polyurethane (TPU) main compartment.



### LED Lenser®

**Product Code #P5R**

The P5R uses our Floating Charge System™ to recharge on the go. The system can be used with a USB port or a standard wall plug. The P5R has a light output of up to 200 lumens and can be recharged up to 1000 times (using one lithium ion battery) making it not only powerful, but economical as well.

**\$90-100**

**\$100-120**



### Coastal Boiling Outdoor Cooker Package with 42 Qt. Pot

**Product Code #5002**

Great for Boiling Crab and seafood! Bolt Together 12" Outdoor Cooker, 15" Top and Bottom Ring, 12" Deep Fryer Thermometer, Listed LP Hose and Regulator with Type 1 Connection, 42 Qt. Aluminum Pot and Lid, Instruction/Recipe Booklet.



### Realtree Camo Leather Backpack

**Product Code #CM202P**

Large capacity, main compartment with a two way zipper can hold 2-liter hydration pouch (not included). It includes two outside mesh pockets that will hold a 20 oz. water bottle. It also includes a variety of different sized pockets. Foam padded back for heavy load comfort and 1" waist belt for added support.



### Citizen Men's Two-tone Stainless Watch w/Round Black Dial

**Product Code #BF058456E**

- Clasp Type- Fold Over Clasp with Push Button
- Dial Color- Black
- Case Color - Two - Tone (Pair)
- Case Material - Stainless Steel
- Case Size -
- Band Type- Bracelet
- Band Color- Two-Tone
- Band Material- Stainless Steel





**Rechargeable Flashlight, Car Charger and AC House Converter**  
**Product Code #RL-1019**

LED RL-1019 MAG-lite black rechargeable flashlight of aircraft grade aluminum, 12 volt DC CAR cigarette adapter & 120 volt AC HOUSE converter. Lifetime warranty . Made in U.S.A. 643 LUMENS HI 148 LUMENS LOW



**ProTac HL 3 1100 Lumens**

**Product Code #SL-88047**

ProTac HL 3 Black - C4 LED. Variable intensity and strobe modes. (High) 1100 Lumens and runs 1.5 hours - (Low) 35 Lumens and runs 43 hours .2 hour Strobe. Nylon Holster



**Large Blue Dial, Stainless Steel Bracelet**

**Product Code #01.0441.149BL**

- Swiss-Made
- Stainless steel case
- Sapphire coated mineral crystal
- Date window
- Luminous hands, numerals & markers
- Water resistant to 100 meters (330 feet)
- Large - 41mm case size, 20mm lug width
- Small - 31mm case size



**Large Black Dial, Stainless Steel Bracelet**

**Product Code #01.0441.145CB**

- Swiss-Made
- Stainless steel case
- Sapphire coated mineral crystal
- Date window
- Luminous hands, numerals & markers
- Water resistant to 100 meters (330 feet)
- Large - 41mm case size, 20mm lug width
- Small - 31mm case size



**GameGuard Outfitter Jacket**

**Product Code #4007GGC**

Featuring the latest innovations in outerwear construction, our fleece-lined GameGuard Outfitter Jacket, Outfitter Toboggan and Outfitter Gloves utilize layers of specialized materials to provide light-weight, comfortable and breathable insulation.



**Deluxe PowerStation w/ Air Compressor & 200W Inverter**

**Product Code #50-188**

Built-in, professional strength 6-gauge booster cables with reverse polarity protection • Built-in 200 Watt Inverter with 2 AC outlets (i.e. household appliances) • Powerful 260 PSI compressor with built-in pressure gauge for inflating any size tire, and 3 adapters for inflating everything from bicycle tires and sports balls to pool rafts.



**360 Wifi Action Camera**

**Product Code #7140-80**

The 360 Wifi Action Camera comes equipped with a 1080P HD lense and a 0.96" LCD screen to take your photography to the next level. Through an App you can stream live video from your connected device with the 360 camera. The 360 Camera is capable of taking both pictures & video with crystal clear resolution in full 360 panoramic view.



**Leatherman® Surge Multi-Tool**

**Product Code #LM23**

4 1/2" Closed. Built with stronger jaws, the Surge delivers more squeezing force with less effort. Surge's unique blade exchanger lets you choose between a saw or diamond wood/metal file. The blade exchanger, two knives and extra-strong scissors are easily accessed from the outside of the tool.



**RoxBox™ Bluetooth Speaker/Power Pack Combo**

**Product Code #EL78**

- Portable and rugged, produces exceptional sound quality and doubles as a single input power bank with 8000 mAh output.
- 30 Watt dual speaker system, IPX5 water resistant rating.
- Powered by V4.0 CSR Bluetooth and supports NFC Technology for quick and easy phone pairing.



### Active Gift Set

**Product Code #80440**

*This gift set includes the Force Bluetooth® Earbuds with Mic & Volume Control (item #3956/3957) and the Active Health Tracker with Heart Rate Monitor (item #70370) perfect for your active lifestyle!*



### Realtree Camo Leather Duffel

**Product Code #CM815**

*This duffel is legal carry-on size with six antique brass bottom feet. The bag has protective polydrill lining and a matching luggage tag for identification. The shoulder strap has a non-slip padded area and adjusts from 36" to 54" for the perfect carrying length, or the strap can be detached and the bag carried with the two Velcro closed handles.*



### Seiko Men's silver-tone Seikoflex band watch

**Product Code #0SNE057**

*SEIKO believes that the wristwatch is a rewarding accessory. The best watches live in harmony and interact with the wearer, and their functions offer a reassuring and expressively satisfying bond. This watch's features and benefits include: Hardlex crystal. 30M.*



### Camo Shoreline Jacket

**Product Code #101090**

- Heavy-hauling, 7.3-ounce camo-printed, 100% nylon oxford shell
- Storm Defender® waterproof breathable membrane keeps water out and lets body heat escape
- Fully taped waterproof seams throughout to ensure you stay dry, including the left-chest map pocket



### Stainless Steel 54 Quart (85 Can) Steel Belted Cooler

**Product Code #33097**

*The Coleman Stainless Steel 54 Qt Steel Belted Cooler is an essential for your next adventure. It is large enough to hold 85 cans and the stainless steel handles with rubber grips make it simple to carry. The classic design will take you back in time and the Have-A-Seat™ lid will rekindle your fondest outdoor memories and equip you to make new ones.*



### Boiling and Steaming Cooker Package w/50qt. Pot & Steam Basket

**Product Code #5012**

*Bolt Together 12" Flat Top Outdoor Cooker, 15" Diameter Top Ring, 50 Qt. Aluminum Ridge Pot with Steamer Basket and Lid, Listed LP Hose and Regulator with Type 1 Connection Deep Fry Thermometer, Instruction/Recipe Booklet. CSA Design Certified.*



### Large Black Dial, Day/Date Stainless Steel Bracelet

**Product Code #01.0341.104CB**

- Swiss-Made
- Stainless steel case
- Sapphire coated mineral crystal
- Day/Date window
- Luminous hands, numerals & markers
- Water resistant to 100 meters (330 feet)
- Large - 41mm case size, 22mm lug width



### Large Silver Dial Bracelet

**Product Code #01.0941.107**

- Swiss-made
- Stainless steel case
- Unidirectional rotating bezel
- Sapphire coated mineral crystal
- Date window
- Superluminova treated hands & markers
- Water resistant to 100 meters (330 feet)



### JBL Charge 3 Waterproof Bluetooth® Speaker

**Product Code #JBL-Charge3**

*JBL Charge 3 is the ultimate, high-powered portable Bluetooth® speaker with powerful stereo sound and a power bank all in one package. The Charge 3 takes the party everywhere, poolside or in the rain, thanks to the waterproof design, durable fabric and rugged housing.*









**Scott Andrews**

**scott@andrewssport.com**  
**(504) 450-9556**